

# Nokia Car Kit CK-200

## Quick Guide and Safety Information

---

## DECLARATION OF CONFORMITY

Hereby, NOKIA CORPORATION declares that this CK-200 product is in compliance with the essential requirements and other relevant provisions of Directive 1999/5/EC. The product is in conformity with the limits defined in Directive 2004/104/EC (amending Directive 72/245/EEC), Annex I, paragraph 6.5, 6.6, 6.8 and 6.9. A copy of the Declaration of Conformity can be found at [http://www.nokia.com/phones/declaration\\_of\\_conformity/](http://www.nokia.com/phones/declaration_of_conformity/).

# CE 0560

© 2010 Nokia. All rights reserved.

Nokia, Nokia Connecting People, Navi and the Nokia Original Accessories logo are trademarks or registered trademarks of Nokia Corporation. Nokia tune is a sound mark of Nokia Corporation. Other product and company names mentioned herein may be trademarks or tradenames of their respective owners.

Reproduction, transfer, distribution, or storage of part or all of the contents in this document in any form without the prior written permission of Nokia is prohibited. Nokia operates a policy of continuous development. Nokia reserves the right to make changes and improvements to any of the products described in this document without prior notice.

Bluetooth is a registered trademark of Bluetooth SIG, Inc.

TO THE MAXIMUM EXTENT PERMITTED BY APPLICABLE LAW, UNDER NO CIRCUMSTANCES SHALL NOKIA OR ANY OF ITS LICENSORS BE RESPONSIBLE FOR ANY LOSS OF DATA OR INCOME OR ANY SPECIAL, INCIDENTAL, CONSEQUENTIAL OR INDIRECT DAMAGES HOWSOEVER CAUSED.

THE CONTENTS OF THIS DOCUMENT ARE PROVIDED "AS IS". EXCEPT AS REQUIRED BY APPLICABLE LAW, NO WARRANTIES OF ANY KIND, EITHER EXPRESS OR IMPLIED, INCLUDING, BUT NOT LIMITED TO, THE IMPLIED WARRANTIES OF MERCHANTABILITY AND FITNESS FOR A PARTICULAR PURPOSE, ARE MADE IN RELATION TO THE ACCURACY, RELIABILITY OR CONTENTS OF THIS DOCUMENT. NOKIA RESERVES THE RIGHT TO REVISE THIS DOCUMENT OR WITHDRAW IT AT ANY TIME WITHOUT PRIOR NOTICE.

The availability of particular products may vary by region. Please check with your Nokia dealer for details. This device may contain commodities, technology or software subject to export laws and regulations from the US and other countries. Diversion contrary to law is prohibited.

9220822/Issue 1 EN

## For your safety

---

Read these simple guidelines. Not following them may be dangerous or illegal. Read the complete user and installation guide for further information.

**SWITCH ON SAFELY**

Do not switch the device on when wireless phone use is prohibited or when it may cause interference or danger.

**ROAD SAFETY COMES FIRST**

Obey all local laws. Always keep your hands free to operate the vehicle while driving. Your first consideration while driving should be road safety.

**INTERFERENCE**

All wireless devices may be susceptible to interference, which could affect performance.

**SWITCH OFF IN RESTRICTED AREAS**

Follow any restrictions. Switch the device off near fuel, chemicals, or blasting areas.

**QUALIFIED SERVICE**

Only qualified personnel may install or repair this product.

**ACCESSORIES**

Use only approved accessories. Do not connect incompatible products.

This product may contain small parts. Keep them out of the reach of small children.

When connecting to any other device, read its user guide for detailed safety instructions. Do not connect incompatible products.



**Warning:** The plugs of this device may contain a small amount of nickel. Persons who are sensitised to nickel may have symptoms from prolonged skin contact with the plugs.

## Quick start

---

Thank you for choosing Nokia Car Kit CK-200. You can conveniently connect two compatible devices to the car kit and make and receive calls hands-free.

This guide describes the basic features of the car kit. Read carefully the complete user and installation guide on the CD that is supplied with the car kit.

For the latest guides, additional information, and downloads related to your Nokia product, go to [www.nokia.com/support](http://www.nokia.com/support).

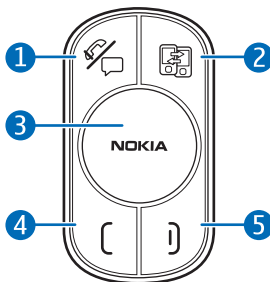
### ■ First time setup

1. Have the car kit installed by a qualified service technician using the original Nokia parts supplied in the sales package.
2. Switch on the car kit (see p. 7) and your mobile device.
3. If you are prompted to select a language, turn the Navi™ wheel (hereafter referred to as wheel) to scroll to the desired language, and press the wheel.
4. Activate Bluetooth on your device, and set up a Bluetooth connection between the car kit and the device.

### ■ Remote control


You can use the remote control to operate the car kit.

1. Voice dialling / Mute key  
Press the voice dialling key to mute or unmute a call, or to activate voice dialling on a compatible mobile device when no call is in progress.
2. Switch key



Press the switch key to switch between the first and second (primary and secondary) connected devices when the Multipoint connection feature is activated.

### 3. Navi wheel

- To enter a phone number or to use speed dialling, in standby mode, turn the wheel left.
- To search for a contact in the contacts list, in standby mode, turn the wheel right.
- To adjust the volume during a call or to scroll through menu items, turn the wheel left or right. To mute the speakers, set the volume to the lowest level.  is displayed.
- To select, for example, *Menu* in standby mode or the highlighted function in the menu, press the wheel.

### 4. Call key

- To make or answer a call or to switch between an active call and a call on hold, press the call key.
- To view the list of last dialled numbers in standby mode, press the call key.
- To redial the last dialled number in standby mode, press the call key twice.

### 5. End key

- To end or reject a call, press the end key.
- To delete the previously entered character when entering text or numbers, press the end key.
- To return to the previous menu level or display view, press the end key.
- To return to standby mode from the menu functions, press and hold the end key for about 2 seconds.



**Tip:** If the battery of the remote control is discharged, you can press the power key to answer or end a call.

# 1. Get started

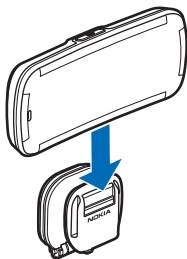
---

## ■ Display and standby mode

### Attach the display to the mounting plate

To use the car kit, slide the display onto the mounting plate.

To detach the display, switch off the car kit, and slide the display upwards from the mounting plate.



### Information displayed in standby mode

When you switch on the car kit, it enters standby mode.

In standby mode, the Bluetooth name of the connected device is displayed. If the car kit is connected to two devices, the primary device is displayed above the secondary one. Also the signal strength, name of the service provider, and battery charge of the connected device are displayed. If the car kit is connected to two devices, this information is displayed for the primary device.

### Display indicators



You have an active call.



You have a call on hold.



There is an incoming call.



There is an outgoing call.



You have missed calls in the device that is displayed above the indicator.



The call is switched to the connected mobile device.



The Multipoint connection feature is activated, and you can connect the car kit to two devices.



You have received a new text message to the device that is displayed above the indicator.



You have muted the speakers connected to the car kit.



The car kit microphone is muted.



The car kit is copying contacts from a connected device. You cannot use the car kit during copying.



Only call-related tones of the connected device are played through the car kit speakers.

If the battery charge of the connected device is low, *Battery low* is briefly displayed.

If the battery charge of the remote control is low, *Remote control battery low* is displayed.

## ■ Switch the car kit on or off

If the ignition sense wire is connected, the car kit switches on when you turn on the car engine and off when you turn off the car engine.

If the ignition sense wire is not connected, press the power key. If no device is connected to the car kit within 10 minutes, the car kit automatically switches off.

After the car kit switches on, it tries to make a Bluetooth connection to one or two last connected devices, depending on the Multipoint connection setting.

## ■ Pair and connect the car kit

You can pair the car kit with up to eight devices and connect it to two devices that support the HFP Bluetooth profile at a time.

To pair and connect the car kit to a compatible device, select *Menu > Settings > Connection > Connection manager > Pair new device*. Within 3 minutes, activate Bluetooth on your device, and set it to search for


Bluetooth devices. For instructions, see the user guide of your device. On your device, select the car kit (Nokia CK-200) from the list of found devices. On your device, enter the Bluetooth passcode **0000**, to pair and connect the device to the car kit.

## **Connect or disconnect the car kit manually**

When you switch on the car kit, it tries to connect to one or two last connected devices, depending on the Multipoint connection setting.

To manually connect the car kit to a device (for example, after connection loss) or disconnect the car kit from a previously paired device, in standby mode, select *Menu* > *Settings* > *Connection* > *Connection manager* and the device.

## **■ Connect the car kit to two devices**

You can connect the car kit simultaneously to two compatible Bluetooth devices by default. To allow the car kit to connect to only one device at a time, in standby mode, select *Menu* > *Settings* > *Connection* > *Multipoint connection* > *off*. If you select *on*, the car kit can be connected to two devices, and  is displayed.

## **■ Software updates**

You can update the software of the car kit.

Download and install the Nokia car kit updater application from [www.nokia.com/support](http://www.nokia.com/support) to a compatible computer.

Use a USB data cable that has a standard USB plug at one end and a micro USB plug at the other end, to connect the car kit display to a computer. The cable is sold separately.

Open the updater application, and follow the displayed instructions. Keep the USB cable connected while the software is being updated.




## 2. Basic use

---

### ■ Copy contacts from connected devices

You can copy contacts (names and phone numbers) from compatible mobile devices that you connect to the car kit.

 is displayed during copying. While the contacts are being copied, you cannot use the car kit.

### ■ Calls

During a call, speak towards the display or the external microphone that is connected to the car kit.

#### Make a call

You can use the remote control to make calls only on the primary device. To make a call on the secondary device, press the switch key to set the device as primary, or make the call from that device.


To make a call using the car kit, you can dial a phone number, select a copied contact from the contacts list, or use speed dialling.

### ■ Manage two calls

You can have two calls at the same time on one of the connected devices and handle the calls from the car kit.

When the car kit is connected to two devices and you receive a call to the other device while you have an active call on one of the devices, first end the active call and then answer the call, or answer the call from the device.

### ■ Switch a call between the car kit and a connected device

To switch a call between the car kit and a connected device, select *Call options* > *Activate handset* or *Activate handsfree*.  indicates that the call is switched to the device.

## ■ View text messages

The *Messages* menu is only displayed if the connected device supports the Nokia proprietary connectivity interface. For compatibility, go to [www.nokia.com/support](http://www.nokia.com/support).

To view a new message from a compatible Nokia device, select *Menu* > *Messages* and the message.

## ■ My own key


The My own key menu is only displayed if the Nokia Accessory Setup Application is installed in the device that is connected to the car kit.

If the application is not already installed in your device, to check the availability for your device, go to [www.nokia.com/support](http://www.nokia.com/support).

When you select this menu, the car kit performs the function that you have specified for a short press of the My own key in the Nokia Accessory Setup Application.

## ■ Audio settings

In standby mode, select *Menu* > *Settings* > *Audio* and from the following:

- *Audible menu* — Set the car kit to play some voice prompts, such as the names of main menus. For information on available languages, go to [www.nokia.com/support](http://www.nokia.com/support).
- *Audio routing* — Select which sounds of the connected device are played through the car kit speakers, muting the car radio. If you select *All device sounds*, all the sounds are played. If you select *Calls only*, only the call-related tones are played, and  is displayed.

## ■ Reset the car kit

To reset the car kit if it stops reacting to your actions, detach the display from the mounting plate for at least 10 seconds, and press the power key to switch on the car kit.

## 3. Installation

---

### ■ Safety information

Observe the following safety guidelines when installing the car kit.

- Only a qualified service technician should install or service the car kit using the approved original Nokia parts supplied in the sales package. Faulty installation or service may be dangerous and may invalidate any warranty which may apply to the car kit.

End users should remember that the car kit comprises of complex technical equipment that requires professional installation using special tools and expert know-how.

- Instructions given in this guide are general guidelines that apply to the installation of the car kit in an automobile. However, due to the wide variety of car types and models available on the market, this guide cannot consider the individual technical requirements relevant for any particular vehicle. Contact the vehicle manufacturer for detailed information about the vehicle in question.
- The car kit is designed to be connected directly to a vehicle with a 12 V, negative grounding. Connection to a 24 V system requires a 24 V to 12 V converter to be used in the VBatt line. The ignition line can be connected directly to the 24 V system.

The car kit has in-built protection for over voltage, but a connection using the wrong polarity might damage the unit.

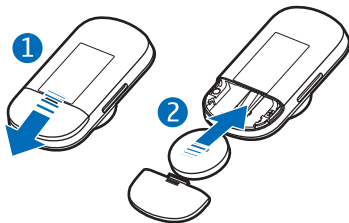
- Remember that modern automotive systems include onboard computers where key vehicle parameters are stored. Improper disconnection of the car battery may cause loss of data, necessitating extensive effort for reinitialisation of the system. If you have any concerns, contact your car dealer before any installation work is done.
- Do not wire the car kit equipment to the high-voltage lines of the ignition system.

- When installing the parts of the car kit, make sure none of them interfere with or hinder the steering or braking systems or other controls or systems used in the operation of the vehicle (for example, airbags). Make sure the car kit and any of its components are not installed where you might come in contact with it in the event of an accident or collision.
- Your service technician or dealer may be able to provide you with information on alternatives for mounting the equipment suitably in your vehicle without requiring bore holes.
- Do not smoke when working on the car. Make sure there is no source of fire or flame nearby.
- Take care not to cause damage to electrical cables, fuel or brake lines, or safety equipment during installation work.
- Make sure cables are placed so that they will not be subject to mechanical wear and tear (for example, not laid under car seats or over sharp edges).

### ■ Insert the remote control battery

The wireless remote control is powered by one CR2032 lithium coin cell battery. Replace the battery only with the same or equivalent type.

1. Slide the cover away from the device (1).
2. Insert the battery with the negative (-) terminal pointing towards the circuit board, and slide the cover back into place (2).



Extreme temperatures reduce the performance and lifetime of the battery. The remote control may not work or *Remote control battery low* may be displayed temporarily in temperatures well below freezing.

## ■ Install the car kit in a vehicle

### **Remote control CU-13R**

The remote control should be located so that it is within easy reach of the user. Do not mount the remote control within the head impact area.

#### **Mount on the dashboard or console**

You can mount the remote control on the dashboard or console using the supplied tape. Do not cover the battery cover of the remote control.

#### **Mount to the steering wheel using the supplied strap**

Install the remote control to the inside of the steering wheel. Do not install the remote control to the centre or outside of the steering wheel.

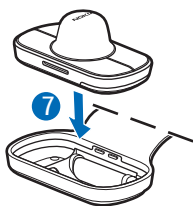
1. Wrap the strap around the steering wheel (not shown in the figures).
2. To open the catch indicated with an arrow, pull the catch (1), and thread the strap through the opening (2).
3. Pull the strap from the end to keep it securely in place (3).
4. Press the end of the strap downwards (4), and press the catch upwards (5).
5. Press the catch against the steering wheel until it locks into place (6).

6. Push the remote control into the holder (7).

### Display

Attach the display using the supplied mounting plate. The display should be located so that it is clearly visible for the user and it can be easily rotated left, right, up, or down.

For the built-in microphone, mount the display so that it is not too far from the driver or exposed to direct air streams from the vents.



## ■ Integration with a car radio system

The car kit can be connected to a car radio system in three different ways:

- Installation using the ISO cable CA-160: When you connect the car kit to the car radio system with this cable, the car radio is muted when you make or receive a call.
- Installation using the power cable CA-153P and an external speaker: The junction box RX-73 is connected to the car radio with the power cable CA-153P, and an optional external speaker is used for calls.
- Installation using the power cable CA-153P and direct input cable CA-161: The junction box RX-73 is connected to the car radio with the power cable CA-153P and the direct input cable CA-161, and the car radio speakers are used for calls.

## ■ Optional accessories

### Charging cable

To charge a compatible mobile device from the car kit, you can use an optional charging cable, such as CA-134.

### Microphone

In noisy car environments, you can use an optional external microphone (such as Nokia MP-2) to improve the audio quality.

## Care and maintenance

---

Your car kit is a product of superior design and craftsmanship and should be treated with care. The following suggestions will help you protect your warranty coverage.

- Keep the car kit dry. Precipitation, humidity and all types of liquids or moisture can contain minerals that will corrode electronic circuits.
- Do not use or store the car kit in dusty, dirty areas. Its moving parts and electronic components can be damaged.
- Do not attempt to open the car kit.
- Do not use harsh chemicals, cleaning solvents, or strong detergents to clean the car kit parts. Only use a soft, clean, dry cloth to clean the surface of the parts.
- Do not paint the car kit parts. Paint can clog the moving parts and prevent proper operation.

### Recycle

Always return your used electronic products, batteries, and packaging materials to dedicated collection points. This way you help prevent uncontrolled waste disposal and promote the recycling of materials. Check product environmental information and how to recycle your Nokia products at [www.nokia.com/werecycle](http://www.nokia.com/werecycle), or [nokia.mobi/werecycle](http://nokia.mobi/werecycle).



The crossed-out wheeled-bin symbol on your product, battery, literature, or packaging reminds you that all electrical and electronic products, batteries, and accumulators must be taken to separate collection at the end of their working life. This requirement applies in the European Union.

Do not dispose of these products as unsorted municipal waste. For more environmental information, see the product Eco-Declarations at [www.nokia.com/environment](http://www.nokia.com/environment).

## Additional safety information

---

### ■ Vehicles

RF signals may affect improperly installed or inadequately shielded electronic systems in motor vehicles such as electronic fuel injection systems, electronic antiskid (antilock) braking systems, electronic speed control systems, and air bag systems. For more information, check with the manufacturer or its representative of your vehicle or any equipment that has been added.

Faulty installation or service may be dangerous and may invalidate any warranty that may apply to the device. Check regularly that all wireless device equipment in your vehicle is mounted and operating properly. Do not store or carry flammable liquids, gases, or explosive materials in the same compartment as the device, its parts, or accessories. For vehicles equipped with an air bag, remember that air bags inflate with great force. Do not place objects, including installed or portable wireless equipment in the area over the air bag or in the air bag deployment area. If in-vehicle wireless equipment is improperly installed and the air bag inflates, serious injury could result.