



SUPPORT GUIDE FOR INSTALLING MODEM .INF FILE MANUALLY IN WINDOWS 2000

NOKIA



Contents

1. INTRODUCTION 1

2. INSTALLING THE MODEM .INF AND SETTING UP 1

Copyright © Nokia Corporation 2002. All rights reserved.

Reproduction, transfer, distribution or storage of part or all of the contents in this document in any form without the prior written permission of Nokia is prohibited.

Nokia and Nokia Connecting People are registered trademarks of Nokia Corporation. Other product and company names mentioned herein may be trademarks or tradenames of their respective owners.

Nokia operates a policy of continuous development. Nokia reserves the right to make changes and improvements to any of the products described in this document without prior notice.

Under no circumstances shall Nokia be responsible for any loss of data or income or any special, incidental, consequential or indirect damages howsoever caused.

The contents of this document are provided "as is". Except as required by applicable law, no warranties of any kind, either express or implied, including, but not limited to, the implied warranties of merchantability and fitness for a particular purpose, are made in relation to the accuracy, reliability or contents of this document. Nokia reserves the right to revise this document or withdraw it at any time without prior notice

The availability of particular products may vary by region. Please check with the Nokia dealer nearest to you



1. INTRODUCTION

This Support Guide shows how to install a modem .inf file manually in Windows 2000. Following requirements should be met

- Laptop computer with OEM Windows 2000 operating system with Service Pack 1 or above
- Fully functional IrDA port in laptop computer (desktop computers not supported)
- MS IRCOMM hot fix for Windows 2000 should be installed for proper IrDA functionality (<http://support.microsoft.com/>)
 - Unless Service Pack 3 is installed
- Modem .inf file for your Nokia phone (www.nokia.com/phones/ select your phone from the drop down menu and then go to Product Support – Downloads page)
- Data services (at least outgoing data) should be activated in order to be able to make data calls
- Good GSM coverage and a well charged battery in both devices, as the data connection's power consumption is usually quite high.

2. INSTALLING THE MODEM .INF AND SETTING UP

Go to **My Computer – Control Panel – Phone and Modem Options**. In *Phone And Modem Options* go to *Modems* leaflet and click on *Add...* and the Add/Remove Hardware Wizard starts. In *Add/Remove Hardware Wizard* select “*Don't detect my modem; I will select it from a list*” and click *Next >* (Figure 1).



Figure 1. Installing the Nokia phone as a modem.

In *Add/Remove Hardware Wizard* select Have Disk... (Figure 2).

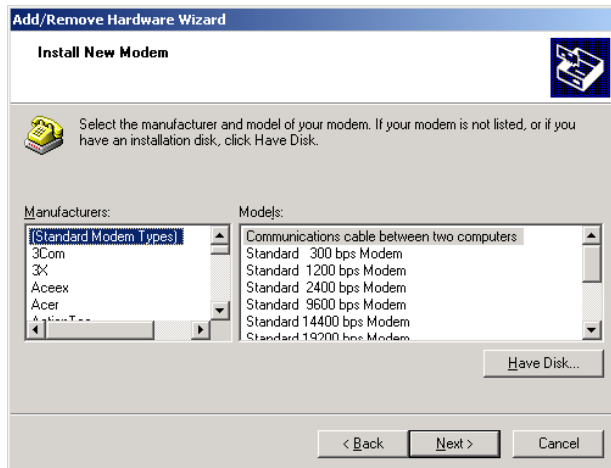


Figure 2.

In *Install From Disk* click Browse... (Figure 3).

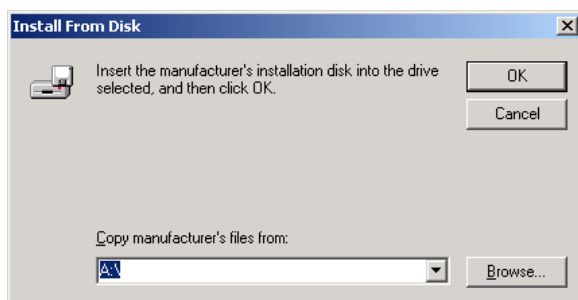


Figure 3.

In *Locate File* browse through drives to find appropriate modem .inf file. (Figure 4).

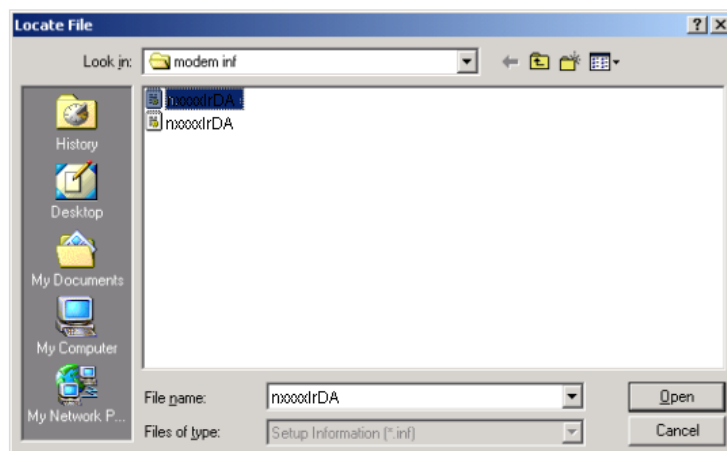


Figure 4. Locating file

After you have located and selected the appropriate modem *.inf* file Windows may ask you a question (Figure 5): (just click on Yes)

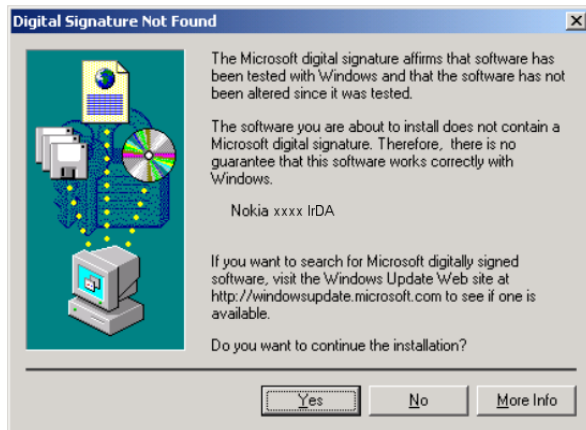


Figure 5. Accepting warning.

Now select the appropriate Nokia phone model from the list and click Next > (Figure 6).

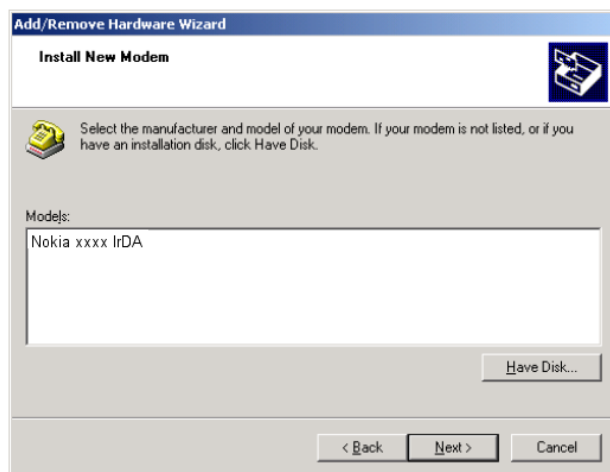


Figure 6. Select modem driver.

Select appropriate port and click Next (Figure 7).

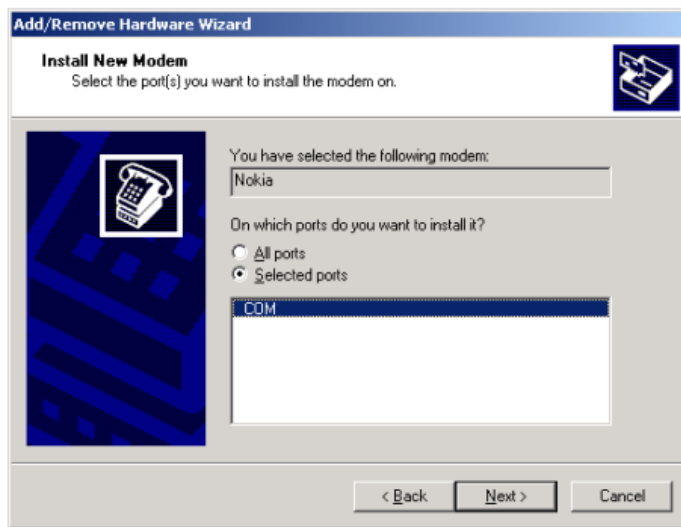


Figure 7.

Now you have successfully installed a new modem to your computer. Just click Finish. Now you can make some configurations if needed or just click OK.