



17.04.00

Quick Guide to Using the Modem Setup for the Nokia 6210

First, you must have the Nokia 6210 modem drivers installed on your computer and, secondly, if you wish to use High-Speed Data services, you must have those services activated on your SIM card. Please also check with your GSM operator what speeds they support in their network and also if the High Speed Data services are in use in the area where you are located. You also should ask your ISP which connection methods they support and, if they support ISDN v.110, whether their modem pool is capable of accepting data as "low" speed, especially during the log-in process, as this is what your phone will give you.

1. Start the Nokia Modem Options either from *Start – Programs – Nokia Modem Options* or from *My Computer – Control Panel – Nokia Modem Options*.
2. Now you should see the Nokia Modem Options user interface on your desktop (Figure 1).

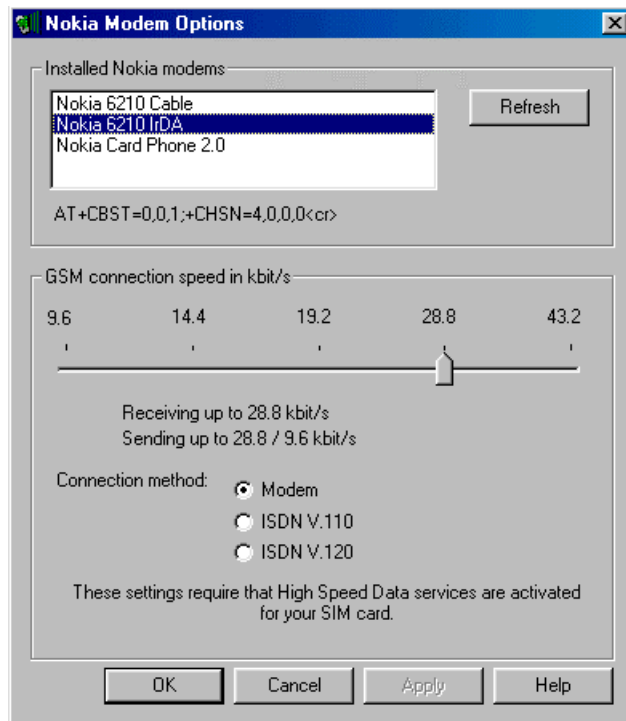


Figure 1. Nokia Modem Options.

3. Select an appropriate modem from the Installed Nokia modems list (shows only High Speed Data compatible phones)
4. Select the desired Connection method and connection speed and click *Apply*.
5. The selected speed will be used the next time you use Dial-Up networking with your phone via IrDA or Cable, depending on which one you chose from the Installed Nokia modems list.

NOTE! You can reset the user interface by clicking the Refresh button.

Legal Notice

The contents of this document are copyright © 1995 – 2000 Nokia. All rights reserved.

Reproduction, transfer, distribution or storage of part or all of the contents in any form without the prior written permission of Nokia is prohibited.

Nokia is a registered trademark of the Nokia Corporation. Nokia product names are either trademarks or registered trademarks of Nokia. Other product and company names mentioned herein may be trademarks of their respective owners.

The contents of this document are provided "as is". Except as required by the applicable law, no warranty of any kind, either express or implied, is made in relation to the accuracy, reliability or content of the document. Nokia reserves the right to revise the document or to withdraw it at any time without prior notice.

Nokia is not responsible for any loss of data, income or any consequential damage howsoever caused.