

NOKIA 6600



SUPPORT GUIDE FOR SETTING WIZARD

NOKIA



Contents

- 1. INTRODUCTION 1
- 2. RUNNING THE SETTING WIZARD 1
- 3. ABOUT THE SETTING WIZARD 6

Legal Notice

Copyright © 2004 Nokia. All rights reserved.

Reproduction, transfer, distribution or storage of part or all of the contents in this document in any form without the prior written permission of Nokia is prohibited.

Nokia and Nokia Connecting People are registered trademarks of Nokia Corporation. Other product and company names mentioned herein may be trademarks or tradenames of their respective owners.

Nokia operates a policy of continuous development. Nokia reserves the right to make changes and improvements to any of the products described in this document without prior notice.

Under no circumstances shall Nokia be responsible for any loss of data or income or any special, incidental, consequential or indirect damages howsoever caused.

The contents of this document are provided "as is". Except as required by applicable law, no warranties of any kind, either express or implied, including, but not limited to, the implied warranties of merchantability and fitness for a particular purpose, are made in relation to the accuracy, reliability or contents of this document. Nokia reserves the right to revise this document or withdraw it at any time without prior notice.



1. INTRODUCTION

The purpose of this document is to help you to use the Setting Wizard application on your Nokia 6600 phone.

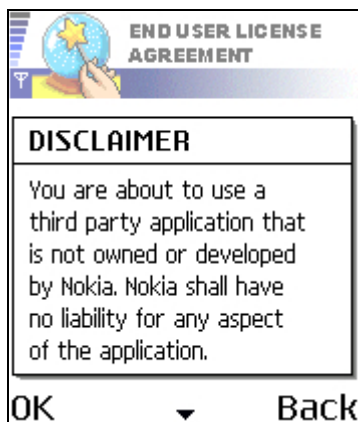
The Setting Wizard configures your phone's settings that enable you to use the browsers and to send and receive Multimedia Messages and emails.

2. RUNNING THE SETTING WIZARD

1. Because the Setting Wizard configures settings for WAP, MMS and Internet access, the application should be run before manually configuring any other browser or messaging settings.
2. Ensure that all other applications are closed.
3. The Setting Wizard application can be found in the applications list. Press the **Applications** button and scroll down until you highlight the Setting Wizard icon.



4. Press the **Joystick** button or select **Options > Open** to run the application. When you run the application for the first time, you will be asked to accept the Disclaimer in the End User Licence Agreement.



5. After accepting the Disclaimer, the Setting Wizard will display the instruction screen:



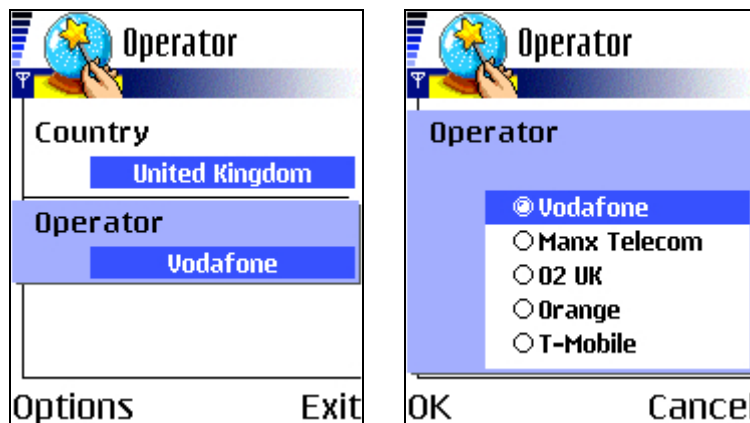
Press **OK** to continue or **Exit** to return to the phone's application menu.

6. The Setting Wizard automatically detects your network operator by reading the details from your SIM card.
- If the Setting Wizard does not recognise your SIM card, you will be asked to select your country and network operator from a list.
 - Select **Options** > **Change** to access the country list. You can also use the **Joystick** to highlight the Country and press the **Joystick** to change and then select the correct country.

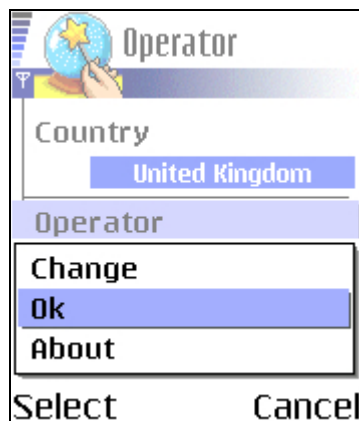


- c. Once the country is selected, you may then choose the network operator.

Scroll down to highlight the Operator. Select **Options** > **Change** to access the network operator list. You can also use the **Joystick** to change and then select the correct network operator.



- d. Once the country and operator have been chosen, select **Options** > **OK**



- e. Although the Setting Wizard has a list of more than 200 network operators, if your country and network operator cannot be found from the list, please close the Setting Wizard application and visit <http://www.nokia.com/phonesettings> to have your network operator settings sent via text message to your phone.

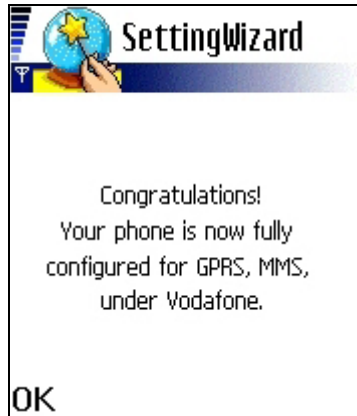
7. The Setting Wizard will then confirm that you want to create the settings for your chosen network operator. Select **OK** to proceed or **Cancel** to return to the country and network operator lists.



8. The Setting Wizard will then program your phone. Progress bars will be visible for approximately 5-10 seconds.



9. Congratulations! Your phone is now configured for MMS, WAP and Internet access.



Notes: Please note that to use these services, you may have to contact your network operator or service provider to activate GPRS. Where possible, the Setting Wizard will display the telephone number to call.

Please note that not all network operators support all services.

Select **OK** to close the Setting Wizard and return to the phone's application menu.



3. ABOUT THE SETTING WIZARD

1. The Nokia 6600 Setting Wizard is a Symbian 7.0 application developed for Nokia by a third party, which will also run on Nokia 7610 and Nokia 6620 phones.
2. Because the Setting Wizard configures GPRS and other settings for WAP, MMS and Internet access, the application should be run before manually configuring any other browser or messaging settings.
3. Email configuration settings can be sent directly to your phone via Nokia's Phone Settings web site at <http://www.nokia.com/phonesettings>
4. Should you experience any problems with the Setting Wizard, please visit Nokia's Phone Settings web site at <http://www.nokia.com/phonesettings> to have your network operator's latest settings sent directly to your phone via text message.