



**SUPPORT GUIDE FOR
NOKIA PC SUITE 4.81
for the Nokia 6310i**

NOKIA





Contents

- 1. INTRODUCTION 1
- 2. SYSTEM REQUIREMENTS 1
- 3. A NOKIA 6310i PHONE USING THE NOKIA PC SUITE 1

Copyright © Nokia. All rights reserved.

Reproduction, transfer, distribution or storage of part or all of the contents in this document in any form without the prior written permission of Nokia is prohibited.

Nokia and Nokia Connecting People are registered trademarks of Nokia Corporation. Other product and company names mentioned herein may be trademarks or tradenames of their respective owners.

Nokia operates a policy of continuous development. Nokia reserves the right to make changes and improvements to any of the products described in this document without prior notice.

Under no circumstances shall Nokia be responsible for any loss of data or income or any special, incidental, consequential or indirect damages howsoever caused.

The contents of this document are provided "as is". Except as required by applicable law, no warranties of any kind, either express or implied, including, but not limited to, the implied warranties of merchantability and fitness for a particular purpose, are made in relation to the accuracy, reliability or contents of this document. Nokia reserves the right to revise this document or withdraw it at any time without prior notice

The availability of particular products may vary by region. Please check with the Nokia dealer nearest to you.





1. INTRODUCTION

This guide briefly describes how to begin using the Nokia PC Suite 4.81 and applications included with the installation package.

2. SYSTEM REQUIREMENTS

To use the Nokia PC Suite 4.81 you need:

- An Intel-compatible PC equipped with Windows 98/98 SE, Windows ME, Windows 2000, Windows XP or Windows NT 4 with SP 5 or later
- At least 40 MB of free disk space
- It is also assumed that you have installed the Nokia PC Suite 4.81
- IrDA port supporting FIR protocol
- A Nokia 6310i phone

3. A NOKIA 6310i PHONE USING THE NOKIA PC SUITE

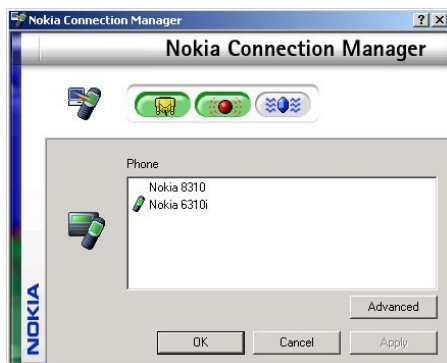
PC Suite 4.81 features:

- Nokia Connection Manager
- Nokia PC Sync (Only briefly introduced. Separate Support Guide available)
- Nokia PC Graphics
- Nokia PC Composer
- Nokia Phone Editor
 - Contact Editing
 - SMS (supports long messages)
 - Handling Profiles and Caller Groups
- Nokia PC WAP Manager
- Nokia Content Copier (Separate Support Guide)
- Nokia Application Installer (not in Nokia PC Suite version 4.80)

3.1 NOKIA CONNECTION MANAGER

Nokia Connection Manager allows you to choose the connection type used when connecting your PC and your phone. When a connection type is selected (highlighted in green in the picture) it shows the phone that is connected to your PC, if you have multiple connection types selected as in the picture 1. you can select the correct phone by selecting it from the list and then click Apply. Currently selected phone has small phone icon on the left side like Nokia 6310i has in the picture 1.

If the phone you selected from the list is connected via cable you can change the COM port if needed by clicking Advanced (see picture 2.). Other COM ports (IrDA or Bluetooth) can't be changed with Nokia Connection Manager.



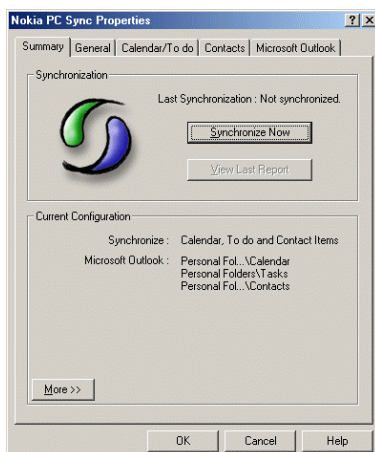
Picture 1.



Picture 2. Changing COM port.

3.2 NOKIA PC SYNC

Synchronize calendar and contact data with Microsoft Outlook (97, 98, 2000, 2002), MS Outlook Express, Microsoft Schedule 7.0 and 7.5, Lotus Organizer (97, GS, 4.1, 5.0 and 6.0) and Lotus Notes (4.81, 4.6 and 5.0) using **Nokia PC Sync**:



Picture 3.

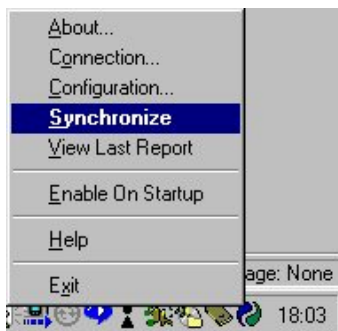
When PC Sync is ready for synchronization you will see the following icon on the taskbar in the bottom right-hand corner of the screen.



If PC Sync is not ready the following icon will appear:



You can begin synchronization from the user interface of PC Sync by clicking the “Synchronize Now” button or by “right-clicking” the mouse on the PC Synch icon on the taskbar in the bottom right-hand corner of your screen and selecting “Synchronize” from the menu:

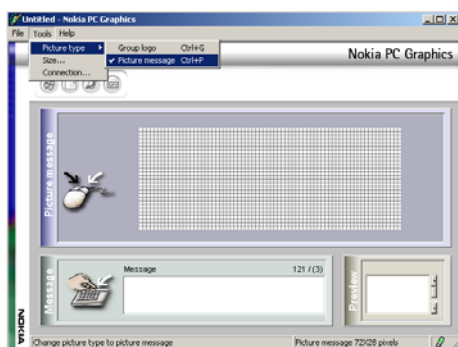


Picture 4.

3.3 NOKIA PC GRAPHICS

Allow you to create your own picture messages, operator logos and group graphics and to do the following:

- Open BMP files and create group graphic or picture messages
- Update directly to your Nokia 6310i
- Send messages to another Nokia phone that supports picture messages or group graphics using the GSM network

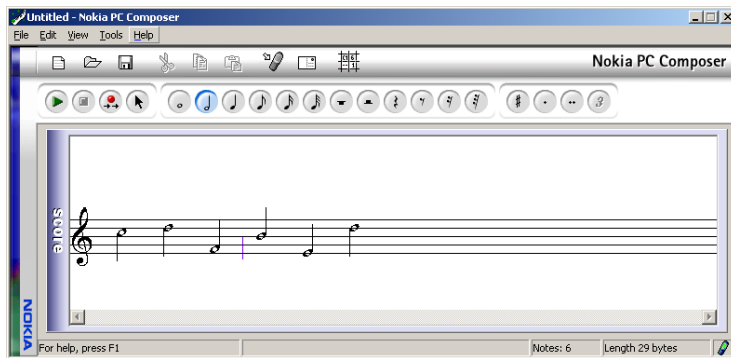


Picture 5.

3.4 NOKIA PC COMPOSER

Enables the creation of your own ringing tones and allows you to:

- Open mid and midi files and convert them into a Nokia ringing tone
- Update ringing tones straight to your Nokia 6310i
- Send ringing tones (Only own composed tones, not fixed or downloaded ones) other Nokia phones over the GSM network

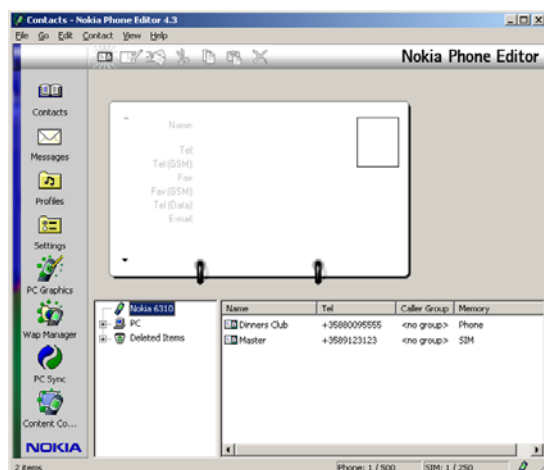


Picture 6.

3.5 NOKIA PHONE EDITOR

Contact editing. Allow you to do the following:

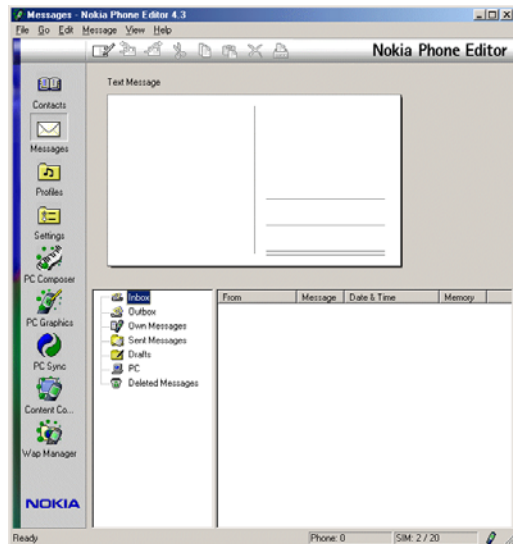
- Store your contacts on your PC's hard disk
- Create new contacts from your PC
- Export and import CSV files (comma separated values, used also by MS Outlook)
- Create your own business cards
- Send and receive business cards



Picture 7.

SMS (short messages)

- You can also send long messages (concatenated)
- Write messages without phone connected (messages will be sent the next time you connect your phone)
- Store messages on your PC's hard disk
- Print messages
- Save messages as txt files on your PC's hard disk

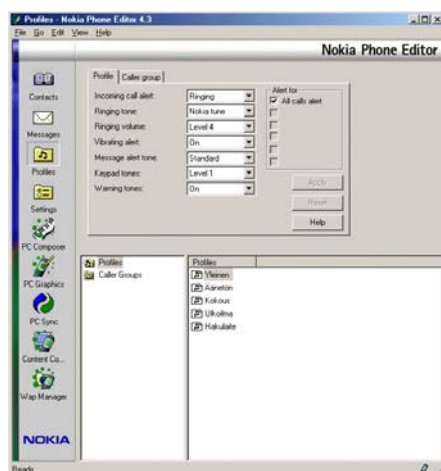


Picture 8.

Profile and Caller Group handling:

- You can activate a desired profile of your Nokia 6310i from your PC
- You can activate desired contacts on your SIM card or in your Nokia 6310i phone's memory to desired Caller Groups from your PC

You can create and use Caller Group Graphics with Nokia PC Graphics



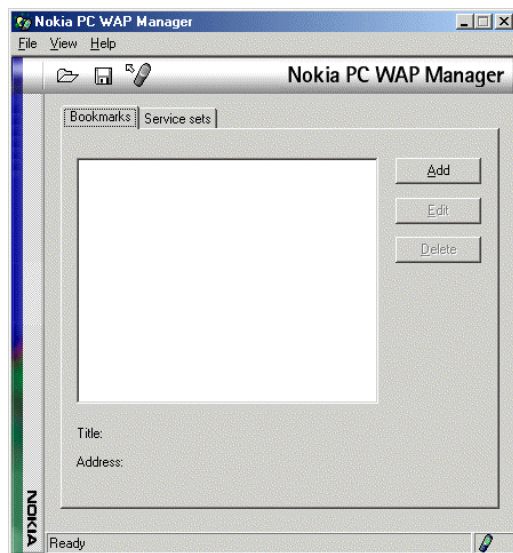
Picture 9.

3.6 NOKIA PC WAP MANAGER

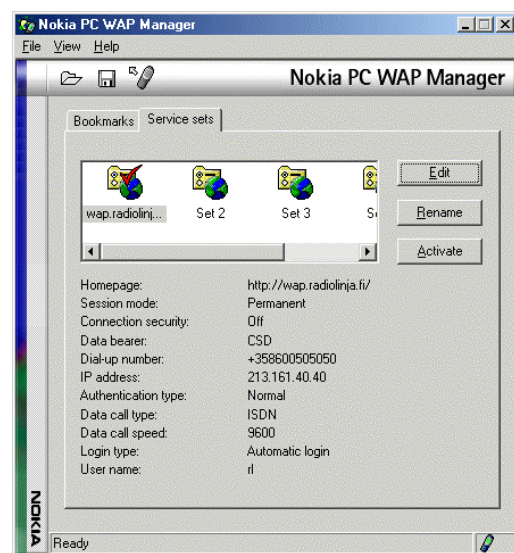
With Nokia PC WAP Manager you can make, edit and save your WAP service sets and WAP bookmarks. Both WAP service sets and WAP bookmarks can be exported to a file and the file can contain either only the WAP service sets or WAP bookmarks or both. Also when importing saved files you can select if you wish to import only the bookmarks even if the file contains the WAP service settings also. Exported files have ending .wap and only those can be imported to Nokia PC WAP Manager.

When you start the Nokia PC WAP Manager (Picture 10.) it will try to connect to your Nokia 6310i and retrieve the settings in there, so by default you can see the current service sets (Picture 11.) in Nokia PC WAP Manager.

Please also note that all the changes you make are automatically saved in to phone.



Picture 10. Nokia PC WAP Manager main window



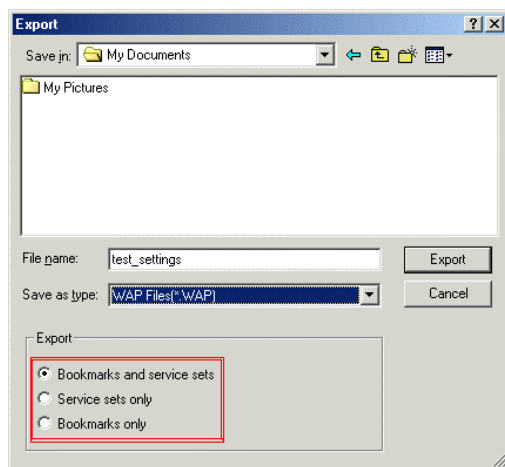
Picture 11. Service sets Window

In Nokia PC WAP Manager you can:

- add/edit/delete WAP bookmarks
 - add: you will be prompted to enter WAP address and bookmark title
 - edit: you can change the WAP bookmarks details
 - delete: deletes the selected WAP bookmark
- save WAP bookmarks to PC hard disk (File – Export)
- import WAP bookmarks from PC hard disk (File – Import)
- edit/rename/activate Service sets (maximum 5 Service sets)
 - edit: you can edit the service settings (Service settings details you can get from your GSM or WAP service provider)

- rename: you can change the name of the service set (this name will be shown in list of sets in your phone)
- activate: makes the currently selected service set the default set in your phone
- save service sets to PC hard disk (File – Export)
- import WAP bookmarks from PC hard disk (File – Import)

Below is a picture of a "Export service sets and Bookmarks to file" –dialogue box. There you can select which items (marked red in the picture) you wish to save on your hard disk.



Picture 12. "Export service sets and Bookmarks to file" –dialogue box.


3.7 NOKIA APPLICATION INSTALLER

With the Nokia Application Installer you can download java applications from your PC to your phone.

Before you begin the installation, the .JAD and .JAR files of the application to be installed must be saved on your PC. When installing the application via Nokia Application Installer, you only need to download the .JAD file, which then finds the .JAR file automatically if the two have been saved in the same folder.

3.7.1 To install an application in the phone

1. Connect your phone to the PC.
2. Open Nokia Application Installer.
3. Click Install... on the tool bar or select it from the File menu.
 - If more than one phone is connected to the PC, a dialog will open asking you to select the phone where you want to install the application.

- 
4. An installation dialog box opens. Browse to the folder where you have saved the .JAD and .JAR files.
 5. Select the .JAD file of the application you want to install and click Install.
 6. An information box will appear when the installation is complete.