



# **SUPPORT GUIDE FOR NOKIA MODEM OPTIONS** for the Nokia 8310

**NOKIA**





# Contents

- 1. INTRODUCTION ..... 1
- 2. SYSTEM REQUIREMENTS ..... 1

**Legal Notice**

Copyright © Nokia Mobile Phones 2001. All rights reserved.

Reproduction, transfer, distribution or storage of part or all of the contents in this document in any form without the prior written permission of Nokia is prohibited.

Nokia and Nokia Connecting People are registered trademarks of the Nokia Corporation. Other product and company names mentioned herein may be trademarks or tradenames of their respective owners.

Nokia operates a policy of continuous development. Nokia reserves the right to make changes and improvements to any of the products described in this document without prior notice.

Under no circumstances shall Nokia be responsible for any loss of data or income or any special, incidental, consequential or indirect damages howsoever caused.

The contents of this document are provided "as is". Except as required by applicable law, no warranties of any kind, either express or implied, including, but not limited to, the implied warranties of merchantability and fitness for a particular purpose, are made in relation to the accuracy, reliability or contents of this document. Nokia reserves the right to revise this document or withdraw it at any time without prior notice.



## 1. INTRODUCTION

---

First you must have the Nokia 8310 modem drivers installed on your computer and secondly if you wish to use High Speed Data or GPRS services you must have those services activated on your SIM card. Please also check from your GSM operator what speeds they support in their network and also if the High Speed Data is in use in that area whereas you are located. Then you also should ask from your ISP which connection methods they support and if they support ISDN v.110 is their modem pool capable of accepting as "low" speed, especially during log-in process, as your phone will give you.

When you are roaming in other GSM operator's network please verify that they have also GPRS roaming agreement

For further information please see Support Guide for Nokia Modem Options and Dial-Up for the Nokia 8310.

## 2. SYSTEM REQUIREMENTS

---

To install and run the Nokia Modem Options, you need:

- An Intel-compatible PC equipped with Windows 98/Me, Windows 2000

For connection between the Nokia 8310 and a PC you need a compatible infrared port in computer



**Note:** In this guide, all references to personal computers (PC) are also applicable to laptop computers.

The infrared connection is only available for Windows 98/Me/2000.

1. Start Nokia Modem Options from *My Computer – Control Panel – Nokia Modem Options*.
2. Now you should get the Nokia Modem Options user interface on your desktop (Figure 1.).

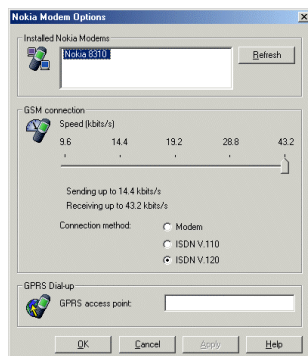



Figure 1. Nokia Modem Options

- 
3. Select appropriate modem from the Installed Nokia modems list (shows only High Speed Data and GPRS compatible phones)
  4. Select the desired Connection method and connection speed or if you wish to use GPRS then give the access point name (APN) which you can get from your GSM service provider and click *Apply*.
  5. The selected speed will be used the next time you use Dial-Up networking with your phone via IrDA.



**Note:** In some computers you may need to put the APN name also to *Extra Settings* under Advanced Connection Settings (My Computer – Dial-Up Networking right click on the GPRS connection and select Properties then click on Configure... then go to Connection tab and there select Advanced) There type into Extra Settings: *at+cgdcont=1,, "APN Name"*.



**Note:** You can reset the user interface by clicking Refresh button.