



# **SUPPORT GUIDE FOR NOKIA MODEM DRIVER AND DIAL-UP for the Nokia 610**

**NOKIA**



# Contents

- 1. INTRODUCTION ..... 1
- 2. SYSTEM REQUIREMENTS ..... 1
- 3. INSTALLING THE NOKIA 610 MODEM DRIVERS ..... 2
- 4. CREATING A DIAL-UP CONNECTION ..... 3
- 5. PAIRING THE NOKIA 610 WITH YOUR COMPUTER ..... 7

**Copyright © 2003 Nokia. All rights reserved.**

Reproduction, transfer, distribution or storage of part or all of the contents in this document in any form without the prior written permission of Nokia is prohibited.

Nokia and Nokia Connecting People are registered trademarks of Nokia Corporation. Other product and company names mentioned herein may be trademarks or tradenames of their respective owners.

Nokia operates a policy of continuous development. Nokia reserves the right to make changes and improvements to any of the products described in this document without prior notice.

Under no circumstances shall Nokia be responsible for any loss of data or income or any special, incidental, consequential or indirect damages howsoever caused.

The contents of this document are provided "as is". Except as required by applicable law, no warranties of any kind, either express or implied, including, but not limited to, the implied warranties of merchantability and fitness for a particular purpose, are made in relation to the accuracy, reliability or contents of this document. Nokia reserves the right to revise this document or withdraw it at any time without prior notice

The availability of particular products may vary by region. Please check with the Nokia dealer nearest to you.



## 1. INTRODUCTION

---

The Nokia 610 functions as a GSM modem, supporting Fax and Dial-up Networking (DUN) via CSD, HSCSD and GPRS protocols. To use these features, you require an appropriate Bluetooth technology adapter card installed in a compatible computer.

In addition, you must also install the appropriate Nokia provided modem driver on your computer. This document describes the installation procedure for Bluetooth technology modem drivers.

In addition to installing the modem driver described in this document, you will also need to activate High Speed Data or GPRS services on your SIM card. Your GSM operator will advise you about the availability and other details of these services and data speeds supported in your network. If you plan to use DUN features (e-mail, Internet browsing), you should also contact your Internet Service Provider (ISP) to determine the connection methods they support.

If you plan to use GPRS services, you do not need to select any speed as the (GSM) network automatically determines the speed it can support (network traffic dependent).

When roaming in other GSM operator's network, you should verify that a GPRS roaming agreement exists for the roaming GSM network.

## 2. SYSTEM REQUIREMENTS

---

To install and run the Nokia Modem Options, you need:

- An Intel-compatible PC equipped with Windows 2000/XP
- For connection between the Nokia 610 and a PC you need a compatible device supporting Bluetooth technology in a compatible computer



### 3. INSTALLING THE NOKIA 610 MODEM DRIVERS

---

Unpack the file “n610driver.zip” into a directory of your choice.

The contents of this file will automatically create one sub-directory named “\bluetooth”, when unpacked.

Perform following steps in order to install the Nokia 610 modem driver for Bluetooth technology:

1. Select Start -> Settings -> Control Panel -> Phone and Modem Options
2. In the Modems property page click the Add... button
3. Check the box “Don’t detect my modem; I will select it from a list” -> “Next>”
4. Select “Have Disk...” -> “Browse...”
5. Change to the directory you unpacked the drivers to
6. Select the file “n610bluetooth.inf” in subdirectory “\bluetooth” -> “Open” -> “OK”
7. Highlight “Nokia 610 (Bluetooth)” in the list -> “Next”
8. Select the (virtual) port your Bluetooth Dialup Networking Profile is connected to (e.g. COM7) -> “Next >”
9. This driver is not signed by Microsoft, so you can confirm the installation warning with “Yes”
10. Click the “Finish” button in order to complete the installation
11. Select “Start” -> “Settings” -> “Control Panel” -> “System” -> “Hardware” -> “Device Manager...” -> “+”(Modems) -> Right Mouse Click “Nokia 610 (Bluetooth)” -> Properties -> Modem
12. Select the desired “Maximum Port Speed” (e.g. 57600 bit/s)

## 4. CREATING A DIAL-UP CONNECTION

Nokia Modem Options and the Nokia 610 phone, in conjunction with a supporting GSM network gives you the possibility to make either a normal GSM data connection or a GPRS connection.

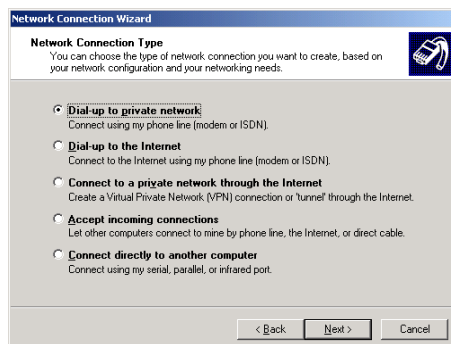
### 4.1 CREATING A NORMAL GSM DATA DIAL-UP CONNECTION

1. In Windows 2000 go to My Computer → Control Panel → Network and Dial-Up Connections – Make New Connection. In Windows 2000 you will see a welcome window.

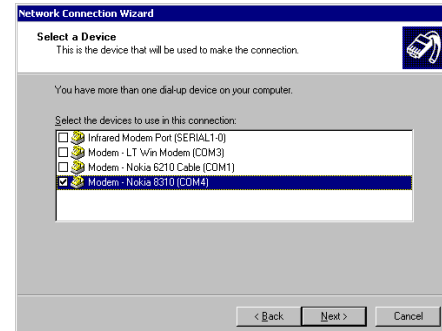
Figures 1–5 show the steps to make a new dial-up connection in Windows 2000



**Note:** You may get different windows or you may not need to go through as many steps as shown. The following pictures show the shortest route.



*Figure 1.*  
Choose either “Dial up to private network” or “Dial-Up to the Internet” and click “Next”.



*Figure 2.*  
Select “Nokia 610 and click “Next”.  
NOTE! Modem list may look different depending on which option you chose in step 7.

**Network Connection Wizard**

**Phone Number to Dial**  
You must specify the phone number of the computer or network you want to connect to.

Type the phone number of the computer or network you are connecting to. If you want your computer to determine automatically how to dial from different locations, check Use dialing rules.

Area code: [dropdown] Phone number: [123456]  
Country/region code: [dropdown]  
☐ Use dialing rules

< Back Next > Cancel

**Figure 3.**  
*Enter your Internet Service Provider's (ISP) phone number and click Next.*

**Network Connection Wizard**

**Connection Availability**  
You may make the new connection available to all users, or just yourself.

You may make this connection available to all users, or keep it only for your own use. A connection stored in your profile will not be available unless you are logged on.

Create this connection:  
☒ For all users  
☐ Only for myself

< Back Next > Cancel

**Figure 4.**  
*Select "For all users" or "Only for myself".  
NOTE! Depending on which option you chose in step 3 you may need to go through more steps*

**Network Connection Wizard**

**Completing the Network Connection Wizard**

Type the name you want to use for this connection:  
Dial-up Connection

To create this connection and save it in the Network and Dial-up Connections folder, click Finish.

To edit this connection in the Network and Dial-up Connections folder, select it, click File, and then click Properties.

☐ Add a shortcut to my desktop

< Back Finish Cancel

**Figure 5.**  
*Name your connection and click **F**inish*

## 4.2 CREATING A GPRS DIAL-UP CONNECTION

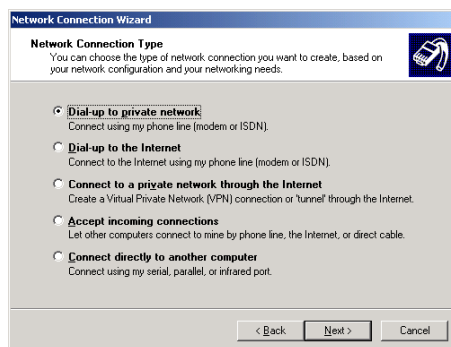
You can get the settings like APN, phone number, possible Domain Name Server address etc. from your GSM operator if necessary.

**To set the Access Point Name (APN), please refer to your 610 User Guide in the section “GPRS Modem Settings”.**

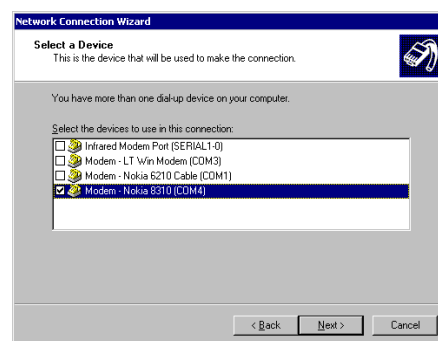
A GPRS connection does not need a “real” phone number, instead you should use the GPRS-Code, e.g. “\*99#”. (Other providers might use “\*99\*\*\*1#”)

In Windows 2000 go to My Computer → Control Panel → Network and Dial-Up Connections – Make New Connection. In Windows 2000 you will see a welcome window.

Figures 6–9 show the steps to make a new GPRS dial-up connection in Windows 2000



*Figure 6.  
Choose either “Dial up to private network” or “Dial-Up to the Internet” and click “Next”.*



*Figure 7.  
Select “Nokia 610 and click “Next”.  
NOTE! Modem list may look different depending on which option you chose in step 7.*

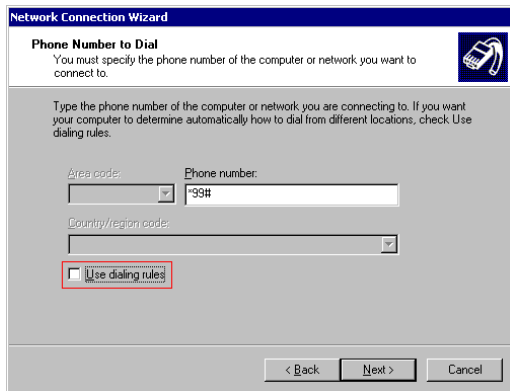


Figure 8.

Enter the corresponding “GPRS-Code” in the field “Phone number”

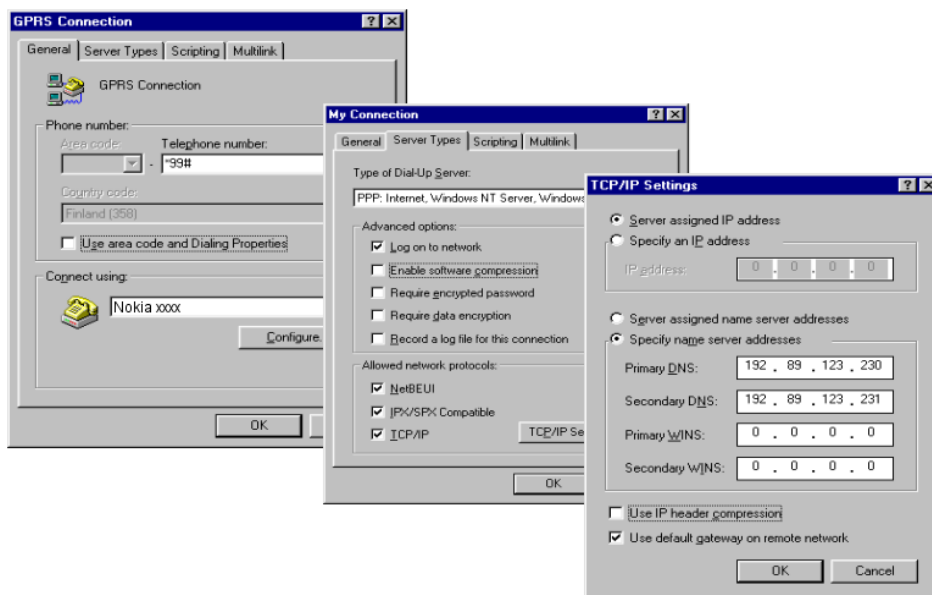


Figure 9.

Please note that some operators require you add information in the Networking tab.

**Disable** “Enable Software compression”, **Enable** “Specify name server addresses”, **Primary DNS**: xxx.xxx.xxx.xxx, **Secondary DNS** xxx.xxx.xxx.xxx,

**Disable** “Use IP header compression”.

The DNS addresses you will get from your service operator.





## 5. PAIRING THE NOKIA 610 WITH YOUR COMPUTER

---

1. Power on your Nokia 610 Phone
2. If you are using the remote SIM access (no SIM is inserted in the Nokia 610 Phone), your Nokia 610 needs to disconnect from the remote sim device to be visible to your computer.  
To do so, select “allow second connection” in the Bluetooth menu of your Nokia 610.  
Warning: your Nokia 610 will be discoverable only after having selected “allow second connection”, and this for a limited time.
3. Under Windows, perform a device discovery.
4. After the device discovery ended, your Nokia 610 should be visible.  
Select it and select the Dial-up networking profile
5. If you connect your Nokia 610 to your computer for the first time, an identification procedure takes place:  
Enter the password of your choice on the computer;  
Re-enter this password on the Nokia 610.