



SUPPORT GUIDE FOR NOKIA MODEM DRIVER AND DIAL-UP for the Nokia 810

NOKIA



Contents

- 1. INTRODUCTION 1
- 2. SYSTEM REQUIREMENTS 1
- 3. INSTALLING THE NOKIA 810 MODEM DRIVERS 2
- 4. MAKING A DIAL-UP CONNECTION 4
- 5. TROUBLE SHOOTING 8

Copyright © 2003 Nokia. All rights reserved.

Reproduction, transfer, distribution or storage of part or all of the contents in this document in any form without the prior written permission of Nokia is prohibited.

Nokia and Nokia Connecting People are registered trademarks of Nokia Corporation. Other product and company names mentioned herein may be trademarks or tradenames of their respective owners.

Nokia operates a policy of continuous development. Nokia reserves the right to make changes and improvements to any of the products described in this document without prior notice.

Under no circumstances shall Nokia be responsible for any loss of data or income or any special, incidental, consequential or indirect damages howsoever caused.

The contents of this document are provided "as is". Except as required by applicable law, no warranties of any kind, either express or implied, including, but not limited to, the implied warranties of merchantability and fitness for a particular purpose, are made in relation to the accuracy, reliability or contents of this document. Nokia reserves the right to revise this document or withdraw it at any time without prior notice

The availability of particular products may vary by region. Please check with the Nokia dealer nearest to you.



1. INTRODUCTION

The Nokia 810 functions as a GSM modem, supporting Fax and Dial-up Networking (DUN) via HSCSD and GPRS protocols. To use these features, you require either a serial connection between a compatible computer's serial port and the Nokia 810's data port, or an appropriate Bluetooth technology adapter card installed in a compatible computer. In addition, you must also install the appropriate Nokia provided modem driver on your computer. This document describes the installation procedure for both serial and Bluetooth technology modem drivers.

In addition to installing modem driver(s) described in this document, you will also need to activate High Speed Data or GPRS services on your SIM card. Your GSM operator will advise you about the availability and other details of these services and data speeds supported in your network. If you plan to use DUN features (e-mail, Internet browsing), you should also contact your Internet Service Provider (ISP) to determine the connection methods they support.

If you plan to use GPRS services, you do not need to select any speed as the (GSM) network automatically determines the speed it can support (network traffic dependent).

When roaming in other GSM operator's network, you should verify that a GPRS roaming agreement exists for the roaming GSM network.

2. SYSTEM REQUIREMENTS

To install and run the Nokia Modem Options, you need:

- An Intel-compatible PC equipped with Windows 2000/XP
- For connection between the Nokia 810 and a PC you need a compatible device supporting Bluetooth technology or a serial port in a compatible computer
- For connection to serial port you need the included cable



3. INSTALLING THE NOKIA 810 MODEM DRIVERS

Unpack the file “n810drivers.zip” into a directory of your choice.

The contents of this file will automatically create three sub-directories named “\cable” and “\bluetooth”, when unpacked.

3.1 FOR SERIAL CABLE


Perform following steps in order to install the Nokia 810 modem driver for serial cable:

1. Change to the directory where you unpacked the files
2. Perform a “right mouse click” on the file “n810cable.inf” in subdirectory “\cable”
3. Select “Install” (This driver is not signed by Microsoft, so you can confirm any installation warning(s) which may occur with “Yes”)
4. Power on your Nokia 810 Phone and connect it with the delivered cable to the computer
5. Select “Start” -> “Settings” -> “Control Panel” -> “Phone and Modem Options”
6. In the Modems “property” page click the “Add...” button
7. Click “Next”. Windows 2000 will find and install the driver for the Nokia 810 phone
8. Click the “Finish” button in order to complete the installation
9. Select “Start” -> “Settings” -> “Control Panel” -> “System” -> “Hardware” -> “Device Manager...” -> “+”(Modems) -> Right Mouse Click “Nokia 810 (Cable)” -> Properties -> Modem
10. Select the desired “Maximum Port Speed” (e.g. 57600 bit/s)

3.2 FOR BLUETOOTH TECHNOLOGY

Perform following steps in order to install the Nokia 810 modem driver for Bluetooth technology:

1. Power on your Nokia 810 Phone
2. Select Start -> Settings -> Control Panel -> Phone and Modem Options
3. In the Modems property page click the Add... button
4. Check the box “Don’t detect my modem; I will select it from a list” -> “Next>”
5. Select “Have Disk...” -> “Browse...”
6. Change to the directory you unpacked the drivers to
7. Select the file “n810bluetooth.inf” in subdirectory “\bluetooth” -> “Open” -> “Ok”

- 
8. Highlight "Nokia 810 (Bluetooth)" in the list -> "Next"
 9. Select the (virtual) port your Bluetooth Dialup Networking Profile is connected to (e.g. COM7) -> "Next >"
 10. This driver is not signed by Microsoft, so you can confirm the installation warning with "Yes"
 11. Click the "Finish" button in order to complete the installation
 12. Select "Start" -> "Settings" -> "Control Panel" -> "System" -> "Hardware" -> "Device Manager..." -> "+"(Modems) -> Right Mouse Click "Nokia 810 (Bluetooth)" -> Properties -> Modem
 13. Select the desired "Maximum Port Speed" (e.g. 57600 bit/s)

4. CREATING A DIAL-UP CONNECTION

Nokia Modem Options and the Nokia 810 phone, in conjunction with a supporting GSM network gives you the possibility to make either a normal GSM data connection or a GPRS connection.

4.1 CREATING A NORMAL GSM DATA DIAL-UP CONNECTION

1. In Windows 2000 go to My Computer → Control Panel → Network and Dial-Up Connections – Make New Connection. In Windows 2000 you will see a welcome window.

Figures 1–5 show the steps to make a new dial-up connection in Windows 2000



Note: You may get different windows or you may not need to go through as many steps as shown. The following pictures show the shortest route.

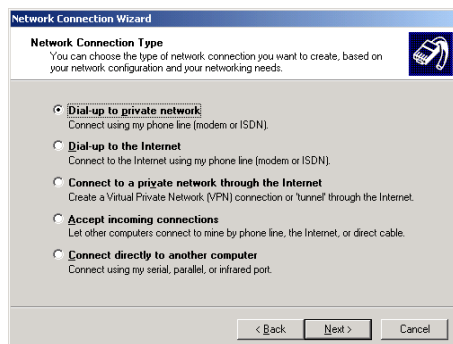


Figure 1.
Choose either “Dial up to private network” or “Dial-Up to the Internet” and click “Next”.

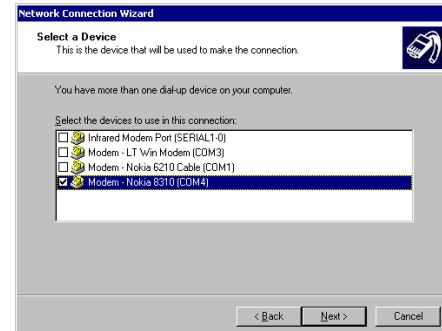


Figure 2.
Select “Nokia 810 and click “Next”.
NOTE! Modem list may look different depending on which option you chose in step 7.

Figure 3.
Enter your Internet Service Provider's (ISP) phone number and click Next.

Figure 4.
Select "For all users" or "Only for myself".
NOTE! Depending on which option you chose in step 3 you may need to go through more steps

Figure 5.
Name your connection and click **F**inish

4.2 CREATING A GPRS DIAL-UP CONNECTION

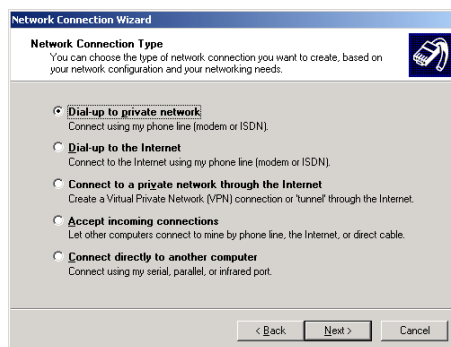
You can get the settings like APN, phone number, possible Domain Name Server address etc. from your GSM operator if necessary.

To set the Access Point Name (APN), please refer to your 810 User Guide in the section “GPRS Modem Settings” on page 38.

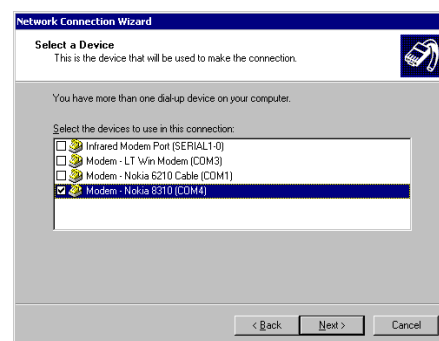
A GPRS connection does not need a “real” phone number, instead you should use the GPRS-Code, e.g. “*99#”. (Other providers might use “*99***1#”)

In Windows 2000 go to My Computer → Control Panel → Network and Dial-Up Connections – Make New Connection. In Windows 2000 you will see a welcome window.

Figures 6–9 show the steps to make a new GPRS dial-up connection in Windows 2000



*Figure 6.
Choose either “Dial up to private network” or “Dial-Up to the Internet” and click “Next”.*



*Figure 7.
Select “Nokia 810 and click “Next”.
NOTE! Modem list may look different depending on which option you chose in step 7.*

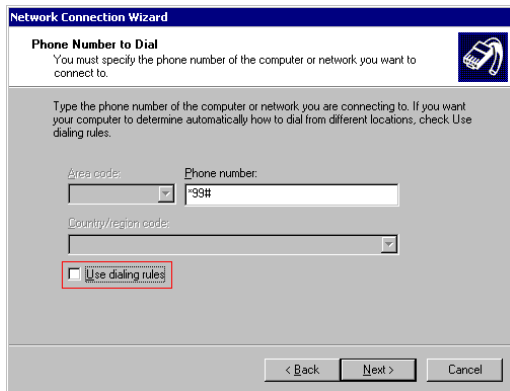


Figure 8.

Enter the corresponding “GPRS-Code” in the field “Phone number”

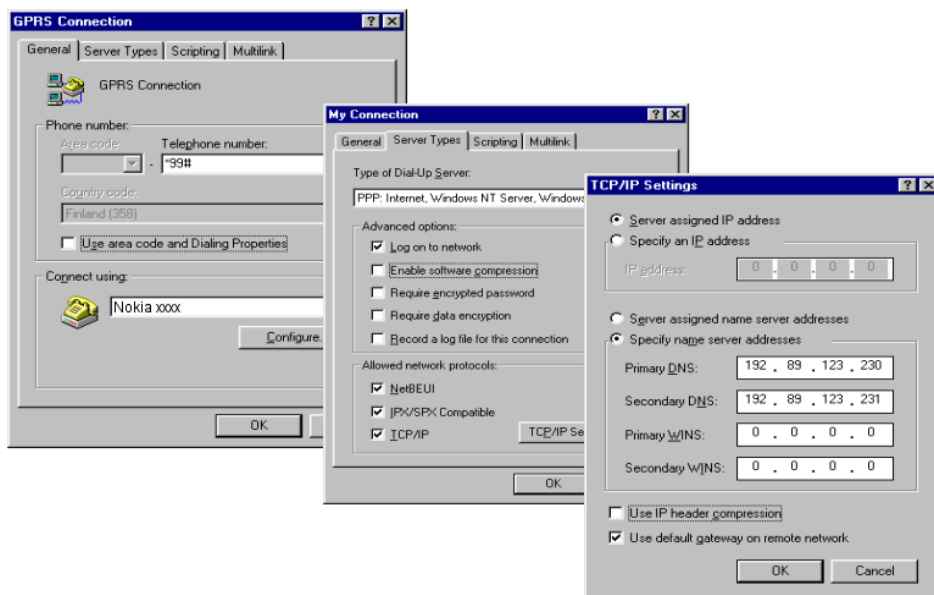


Figure 9.

Please note that some operators require you add information in the Networking tab.

Disable “Enable Software compression”, **Enable** “Specify name server addresses”, Primary DNS: xxx.xxx.xxx.xxx, Secondary DNS xxx.xxx.xxx.xxx,

Disable “Use IP header compression”.

The DNS addresses you will get from your service operator.



5. TROUBLE SHOOTING

5.1 PROBLEMS INSTALLING NOKIA 810 MODEM DRIVER

5.1.1 If you have already used a Nokia 810 Phone with the computer, follow the following steps

- Search in the “WinNT\inf” directory of your computer all the “*.inf” files for the string “SERENUM\NMP810”
- For all “*.inf” files containing this match delete from the “WinNT\inf” directory the files named “*file_found.inf*” and “*file_found.pnf*”
- Remove nmp0810.sys in folder “WinNT\system32\drivers”