



PC Suite for Nokia 9110 Communicator, setting up connection

1. REQUIREMENTS

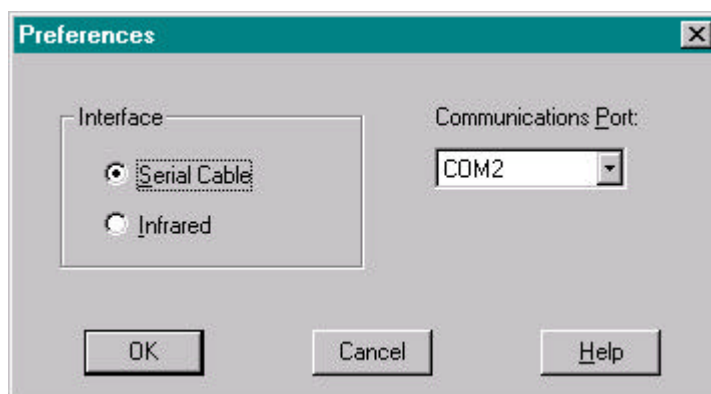
For creating connection between the Nokia 9110 Communicator and the PC you need to have the PC Suite for Nokia 9110 Communicator software installed on your PC. It can be found from the CD-ROM in the Nokia 9110 sales package. For more detailed information about the installation please check PC Suite for Nokia 9110 Communicator User's Manual.

You also need DLR-2 cable (included in the sales package) or IrDA capability from the PC for creating connection between the Nokia 9110 and the PC. The Advanced Desktop Stand DCH-7 (accessory) can be used with DLR-2 cable connection. It enables you some easy synchronisation possibilities with just pressing synchronisation button in the desktop stand.

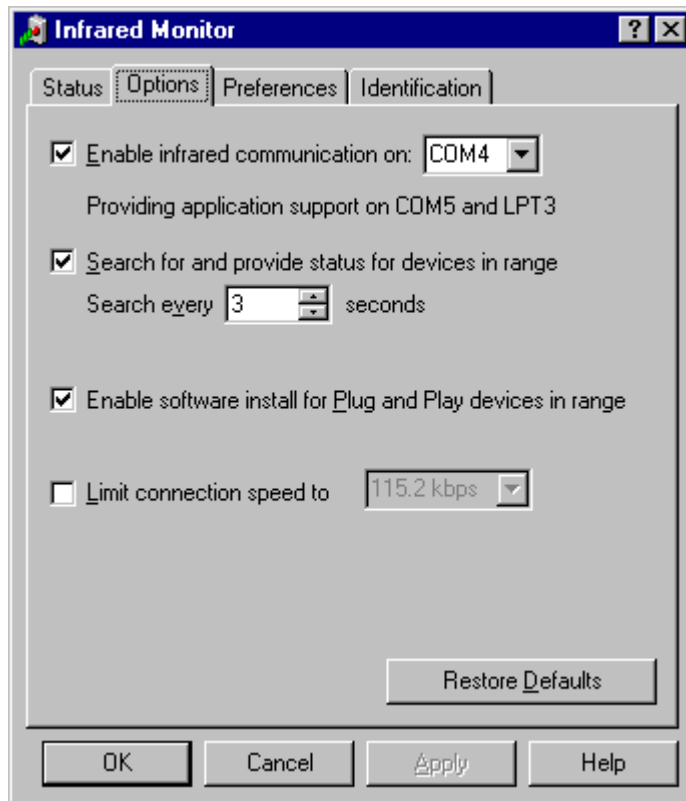
The PC Suite works with Windows 95 and Windows NT operating systems and it requires IBM-compatible 486 PC or higher with 15 MB free hard disk space, CD ROM drive and VGA monitor or better. For Windows 3.x or Macintosh use the Nokia Communications Server (NServer) software for creating connection. It can be found from sales package.

2. SETTING UP

For creating connection between the Nokia 9110 and PC you need to check the configurations of the PC Suite. In the installation you have chosen some COM port for creating connection. You can check your COM port selection easily from the PC Suite by choosing Options and Preferences. Please note also that you have the correct connection type Serial Cable or Infrared chosen. Default is Infrared so for Serial Cable connections you need to change the selection.



The PC Suite uses the virtual COM port with IrDA connection. The correct COM port selection for Infrared connections can be easily checked from the Control Panel by double clicking in the Infrared icon. Choose Options tab and check what COM port is mentioned in the "Providing application support on COMx and LPTx" text. This is the virtual COM port that needs to be selected in the PC Suite Preferences.



If you do not have the Infrared icon in the Control Panel it means that you need to install the IrDA 2.0 Infrared driver to your PC. The driver can be found at Microsoft's website <http://www.microsoft.com>.

You can find more information about setting up the Infrared connection from "Quick Guide to use IrDA connection with Nokia 9110 Communicator"

3. OPTIONS

From all PC Suite applications you can access to Options that includes Desk stand button settings, Registered Communicators and Preferences. From the Desk stand button settings you can choose do you want to make automatic backup or synchronise your calendar, to-do list and contacts by pressing the button in the Desk stand.

When you connect your communicator for the first time with PC Suite to your PC the communicator will be registered by the serial number. You can then name your communicator e.g. by name if you have several devices using the same PC Suite. This enables you to have own settings for different communicators.

4. TROUBLESHOOTING

Q: I have the IrDA 2.0 driver installed to my PC but why I still can not establish connection?

A: Check that you have the correct COM port selected in the PC Suite options. Check from the Control Panel that this is the COM port where the IR port is offering application support (virtual COM port) and not the physical COM port (Enable infrared communication on).

Q: I am trying to establish cable connection and I have the correct COM port selected. Why the communicator is not responding to PC Suite in any way?

A: Please check that the COM port selection is correct. Check also that the cable is firmly connected. Make sure that the connection type selection in PC Suite Options and Preferences is Serial Cable. If it is Infrared the connection can not be established despite correct COM port selection.

Q: When I press the button in the Desk stand it is not synchronising my calendar or contacts automatically. What should I do to make it work?

A: You have to choose from Options and Desk stand button settings do you want to synchronise your calendar and contacts by pressing the button or do you want to make automatic backup.

Legal Notice

The contents of this document are copyright © 1995 – 1999 Nokia. All rights reserved.

Reproduction, transfer, distribution or storage of part or all of the contents in any form without the prior written permission of Nokia is prohibited.

Nokia is a registered trademark of Nokia Corporation. Nokia's product names are either trademarks or registered trademarks of Nokia. Other product and company names mentioned herein may be trademarks of their respective owners.

The contents of this document is provided "as is". Except as required by the applicable law, no warranty of any kind, either express or implied, is made in relation to the accuracy, reliability or content of the document. Nokia reserves the right to revise the document or withdraw it at any time without prior notice.

Nokia is not responsible for any lost of data, income or any consequential damage howsoever caused.