
Nokia Data Suite 3.0

Installation Guide

Copyright © Nokia Mobile Phones 2000. All rights reserved.

Reproduction, transfer, distribution or storage of part or all of the contents in this document in any form without the prior written permission of Nokia is prohibited.

Nokia and Nokia Connecting People are registered trademarks of Nokia Corporation. Other product and company names mentioned herein may be trademarks or trade-names of their respective owners.

Nokia operates a policy of continuous development. Nokia reserves the right to make changes and improvements to any of the products described in this document without prior notice.

Under no circumstances shall Nokia be responsible for any loss of data or income or any special, incidental, consequential or indirect damages howsoever caused.

The contents of this document are provided "as is". Except as required by applicable law, no warranties of any kind, either express or implied, including, but not limited to, the implied warranties of merchantability and fitness for a particular purpose, are made in relation to the accuracy, reliability or contents of this document. Nokia reserves the right to revise this document or withdraw it at any time without prior notice.

The availability of particular accessories may vary by region. Please check with the Nokia dealer nearest to you. Please dispose of batteries properly.

Contents

Important Safety Notes

Introduction	1
Contents of the sales package	1
Hardware and software requirements	1
Network services	1
Communications software	2
Installing Nokia Data Suite.....	2
First installation steps	2
Nokia Data Suite 3.0 Setup	3
Software Licence Agreement	3
Setup Type	4
Connect Phone	5
COM-port Selection	5
Start Copying Files	5
Driver Installation	5
User Information	5
Infrared COM-port Selection (Windows 95 only)	5
Check Infrared Connection (Windows 95 only)	5
Setup Complete	6
Getting Started	6
Starting Nokia Data Suite	6
Using Nokia Data Suite	6
Communications over the cellular network	7
Charge in the phone and computer batteries	7
Signal strength affecting cellular transmissions	8
Troubleshooting	8

Important Safety Notes

All the safety instructions in the user's guides of your phone and computer also apply when this product is used for data and fax calls.

Remember to make backup copies of all important data to protect against possible loss or alteration.

The connecting cable to be used with this product is in the sales package. To disconnect the cable from the phone, hold the connector and remove the cable.

Introduction

Nokia Data Suite is a software-based solution for you to benefit from advanced communications functions with the help of your mobile phone. You can easily connect your mobile phone to a compatible PC for sending and receiving files, faxes and e-mail, and accessing the Internet.

Nokia Data Suite also enables you to manage various phone functions from your PC. You can, for example, write and send text messages and add new names and phone numbers to your phone's memory.

This guide describes how to install the Nokia Data Suite software onto your PC and how to start using it. For more detailed information on the use of the software, refer to the Nokia Data Suite Online Help.

Contents of the sales package

In the sales package, you should find the following items:

- a CD-ROM containing the software, including the Online Help
- a DAU-9P serial connection cable
- this installation guide

The licence agreement is included in the Setup program and Online Help.

If you cannot find all these items, contact your dealer.

Hardware and software requirements

You need the DAU-9P connection cable included in the sales package to connect your mobile phone to the standard RS-232C serial port of your computer.

To install and run Nokia Data Suite, you should have:

- a Nokia 6110 or 5110 compatible phone operating in a GSM900 or GSM1800 network
- an Intel compatible PC running Windows 95/98, Windows NT 4.0 (with Service Pack 3 or newer) or Windows 2000
- at least 15 MB of free disk space

Network services

Nokia Data Suite works only in the GSM900/GSM1800 networks.

A number of features supported by Nokia Data Suite are called network services. Before you can benefit from any of these services, you must subscribe to them from your service provider and obtain instructions for their use. Services that need to be subscribed to are typically the Short Message Service (SMS), data service, and fax service.

2 Installing Nokia Data Suite

Some service providers may not provide all communications services. Contact your service provider for further information about the availability and details of the services in your home network.

To access the Internet you must have subscribed to the data service from your service provider and obtained an Internet access point from an Internet service provider.

Communications software

Nokia Data Suite, together with your mobile phone, provides the functionality of a cellular modem. In order to be able to connect to a remote computer, to send and receive files, email and faxes, and to access the Internet, you need the required data and fax communications software. You can use Nokia Data Suite with most commercially available fax and data communications applications. For example, you can use applications supplied with Windows 95/98, Windows NT 4.0 or Windows 2000, such as Dial-Up Networking, HyperTerminal and Microsoft Exchange.

These applications must be correctly configured for use with Nokia Data Suite. For more information on how to use Nokia Data Suite with a communications application, please refer to the user documentation of the application or visit the website <http://www.forum.nokia.com>.

Nokia Data Suite can be controlled with AT Commands. For more information, refer to the Online Help.

Installing Nokia Data Suite

During the installation, various selections are made. You will find step-by-step information on the Setup windows below.

If you want to quit the Setup program without installing or uninstalling, just click **Cancel** and the **Exit Setup** window will offer you the possibility of quitting the Setup program. Click **Exit Setup** to quit Setup.

If you want to rerun Setup after having quit the installation before it was completed, follow the installation steps normally as if you were installing the program for the first time.

First installation steps

- 1 Connect your phone to the standard RS-232C serial port of your computer by using the DAU-9P connection cable included in the sales package. The cable connects in only one way. Make sure the phone is switched on.
- 2 Exit all Windows programs.
- 3 Insert the CD-ROM in the CD-ROM drive.
- 4 Click the Windows **START** button.
- 5 Select the **Run** command.

The Run dialog box appears on the screen. Type in the following command line: **D:\DISK1\SETUP**

In the above command line, "D:\\" is the CD-ROM drive.

- 6 Click **OK** or press Enter. Wait while the system initialises Setup. The Welcome window of the Setup is then displayed.
- 7 Click **Next** to continue with Setup.

Nokia Data Suite 3.0 Setup

Note: This window appears only if Nokia Data Suite is already installed on your PC. There are three options available:

- **Add/Remove Components**

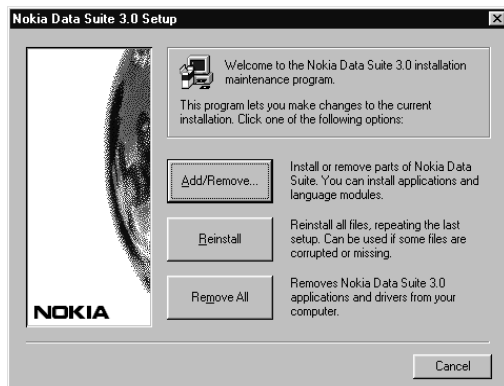
Select this option, if you want to install or remove components. In the **Select Components** window, select the components that you want to install, and clear the components you do not want to install. Click **Next** to continue with Setup.

- **Reinstall**

Select this option to reinstall all the files. This reinstallation repeats the previous setup. You can choose to reinstall when some of the files have been corrupted.

- **Remove All**

Select this option if you want to uninstall all the components.



Software Licence Agreement

You must read through and accept the Nokia Mobile Phones Licence Agreement before you can continue with the installation. If you do not accept the Licence Agreement, you cannot use the program and Setup will stop the installation of the program. Select the language of the agreement from the drop-down list box. Click **Yes** to accept the Licence Agreement.

4 Installing Nokia Data Suite

Setup Type

There are three setup types available, depending on which components and languages you want to install:

Typical

- installs Nokia Data Suite, PC Composer, PC Graphics, and PC Restore, and two languages: English and the current Windows language if available.

Compact

- installs Nokia Data Suite and the English language.

Custom

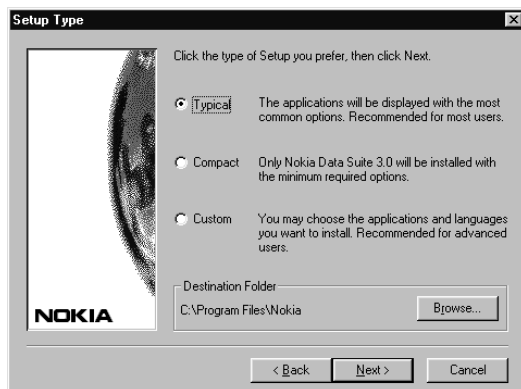
- installs the selected components and languages. If you select this option, the **Select Components** window appears, and you can select the applications you want to install. Then click the **Languages** button, and in the **Select Languages** window select the languages you want to install with each application. Click **Continue**.

Note: If your phone is a Nokia 6110/6130/6150 and if your PC runs Windows 95 and has infrared capabilities, it is possible to connect your phone to a compatible PC via an infrared connection. To install the Infrared Connection component, select **Infrared Connection**.

Setup suggests C:\Program Files\Nokia as the default installation directory. If you want to install the program in another drive or directory click **Browse**.

The program places some of the files in your Windows directory and automatically installs and configures the Windows modem settings.

The program itself requires at least 10 MB of disk space, but during installation Setup needs approximately 15 MB of disk space. If this is acceptable, click **Next** to start the installation.



Connect Phone

If you have not connected your phone to the PC, connect it now. Use the DAU-9P connection cable included in the sales package. Plug the connection cable into the standard RS-232C serial port of your computer and into the bottom of your phone. The cable connects in only one way. Make sure that the phone is switched on. Click **Next**.

COM-port Selection

When Setup has located your phone, the installation will proceed. If Setup does not find your phone, make sure that your phone is properly connected to the PC and click **Next** to redetect the COM-port. If this does not help, you need to manually select the COM-port which the phone is connected to. When the correct COM port has been found or manually defined, click **Next** to continue.

Start Copying Files

The **Start Copying Files** window displays the current settings. Click **Next** to proceed, and **Back** to change the settings.

Driver Installation

Setup installs the virtual port and modem drivers for your phone. When they are installed, **OK** appears next to each item. If one or more tests failed, check that your phone is properly connected to the PC, and click **Retest** to test again. If **Retest** fails, see the Troubleshooting section for more information. Click **Next** to proceed.

User Information

In this window, you can enter your user information. Click **Next** to proceed.

Infrared COM-port Selection (Windows 95 only)

This window appears if you selected the Infrared Connection component in the **Select Components** window (Custom setup type). You can accept the detected COM-port or select another COM-port by clicking **Set port manually**. After the COM-port is selected, activate the IR port of your phone (see the user's guide of the phone for information) and make sure that the phone's infrared port faces the infrared port of the PC. The preferable distance between the two devices in infrared connection is one metre at most. There must be no obstructions between the two devices. Click **Next** to proceed.

Check Infrared Connection (Windows 95 only)

Setup checks the driver functionality and infrared link reliability. If you want to use the infrared connection when you start Nokia Data Suite after the installation, select the **Use infrared connection** check box. You can change

6 Getting Started

the connection type later in the Settings main view, Connection tab. Click **Next**.

Setup Complete

The installation has been completed. Select **Yes, I want to restart my computer now** to restart your computer. Finally, click **Finish**.

Please read the Readme file, included in the the Nokia Data Suite Program Group for the latest information about the program. The file is provided in English.

Getting Started

Starting Nokia Data Suite

Before you start using Nokia Data Suite, make sure that you have connected your mobile phone to the PC with the connection cable included in the sales package. If you selected the infrared connection during the installation, activate the IR port of your phone and make sure it faces the IR port of the PC before you start Nokia Data Suite.

To start Nokia Data Suite, click the Windows Start button, point to Programs and select Nokia Data Suite 3.0.

Infrared connection (Windows 95 only)

If your phone is a Nokia 6110/6130/6150 and if your PC runs Windows 95 and has infrared capabilities, it is possible to connect your phone to the PC via an infrared connection. To make the infrared connection available, select the Custom setup type and select the Infrared Connection component in the **Select Components** window.

After this setup, the connection method can be selected in the Settings main view, Connection tab.

Using Nokia Data Suite

Nokia Data Suite consists of six applications: Contacts, Messages, Dialler, Profiles, Calendar and Settings. To start using an application, click the application icon you want on the left-hand icon bar.

The program windows are similar to Windows program windows, and you can use general Windows functions. Please refer to the Windows documentation for information on the Windows features.

Detailed information on how to use Nokia Data Suite is available in the Online Help. To open Help, click the Help menu or Help buttons in the Nokia Data Suite windows.

Communications over the cellular network

Note: Before you can benefit from the services provided by Nokia Data Suite and the cellular network, you must subscribe to the corresponding services (data, fax, or Short Message Service) from your service provider.

Internet access requires that you be subscribed to a data service from your service provider and that you have an Internet access point from an Internet service provider.

Text messages

Before you can send text (SMS) messages with the Nokia Data Suite program and your mobile phone, you need to know the phone number of your local Short Message Service Centre (SMSC).

You obtain this number from your service provider. If you already have the number stored in the memory of your phone, Nokia Data Suite automatically retrieves it from there and it is shown in the Settings window, Messages tab. See the user's guide of your phone for more details on storing the SMSC number in your phone's memory.

Data and fax communication

You can use Nokia Data Suite, together with your mobile phone, as a modem to access databases and establish connections to remote computers. The normal transmission speed in data and fax connections is 9,6 kb per second, but in data connections, Nokia Data Suite also supports the 14,4 kb per second transmission speed.

You can use Nokia Data Suite with a variety of Windows-compatible fax and data communications applications. The data transfer and fax functions depend on the applications you have chosen, not on the computer or Nokia Data Suite. For information on how to use a data or fax communications application, please refer to its documentation for a step-by-step description.

Nokia Data Suite supports three fax classes: EIA/TIA Class 1, Class 2, and Class 2.0. If you have problems in using the program for fax transmission, ensure that the remote end fax machine is Group 3 compatible.

Charge in the phone and computer batteries

The power consumption of your phone is approximately the same for data/fax calls as it is for voice calls of the same duration. For more information on charging your phone battery, refer to the user's guide of your phone.

You can use the phone with Nokia Data Suite even when the phone is being charged.

For mobile usage, it is recommended that you have a charged computer battery. It may be possible to charge the battery while in use.

Signal strength affecting cellular transmissions

When you use Nokia Data Suite to send a fax, data, or SMS message, you need to be in an area with network coverage. Cellular connections can be made from most of the locations where your mobile phone operates.

Cellular networks differ from landline networks in many ways, for example, traffic loads and the strength of radio signals may vary in a cellular network.

It is recommended that you move the phone to a location where the strongest possible cellular signal can be obtained. When the signal is strong, cellular transmission is efficient.

Troubleshooting

Read the **Readme** and **Troubleshooting** files included in the Windows Program Group of Nokia Data Suite.

This chapter points out the basic problems that could occur when you are installing the program. Below, you will find a list of symptoms and possible actions you can take if you are in any of the following situations.

Setup will not run properly and returns an Error Message stating that the operating system is not compatible.

Nokia Data Suite is compatible with Windows 95/98, Windows NT 4.0 (with Service Pack 3 or newer) and Windows 2000.

The Setup program does not start properly or does not complete the installation.

You should have at least 15 MB of free disk space in your system.

Close all unnecessary Windows programs before starting Setup. Also make sure that there are no MS-DOS programs running in the Windows DOS Prompt.

If you want to install Nokia Data Suite on a PC that runs Windows NT 4.0, you must have administrator privileges.

Not enough disk space for installation.

There is not enough space for completing the installation on the drive you have selected. Select another drive for installation or delete unnecessary files to free additional disk space.

If you have several hard disk drives in your system and you decide to install the program on a drive other than the one where your Windows system files are located, disk space is still required on both drives. The program will always need to place some files in your Windows directory.

Setup does not accept the destination directory you have typed in.

The program can only be installed on a local drive.

Check if the directory where you are trying to install the program is a READ

ONLY directory. Select another directory or change the settings of the directory in Explorer (File/Properties - Attributes Window - Read Only setting).

The path to your directory is too long. Select another directory or shorten the names of the subdirectories.

Mobile phone not found.

Your mobile phone is not properly connected to the computer. Make sure that the connection cable is plugged into the RS232C serial port of your computer and into the mobile phone. The cable must be connected throughout the entire installation process.

Your mobile phone is switched off. The phone must be switched on during the installation.

Make sure that your phone is fully compatible with the program. If in doubt, contact your dealer.

Check that there are no Windows power saving settings selected in your laptop. These may cause problems with Nokia Data Suite.

There may be a problem with the COM port. Nokia Data Suite needs two ports, the physical port to which the phone is connected (usually COM1 or COM2), and the virtual port, which can be one of the COM ports between COM2 and COM9. Nokia Data Suite chooses the first free COM port as the virtual COM port.

Nokia Data Suite must be able to use the port to which the "Nokia GSM Data 3.0" modem is connected. To find out which port Nokia Data Suite is using, open the Windows Device Manager from Control Panel/System and double-click Ports (COM & LPT).

If you are using a data or fax communication application, specify Nokia Data Suite in its settings. For example, Nokia Data Suite is physically connected to COM1, which is shown during Setup. Setup also creates a virtual port for Nokia Data Suite, for example, COM3.

If necessary, uninstall Nokia Data Suite and remove all serial COM port settings from Ports (COM & LPT), including the infrared. Then restart Windows, reinstall Nokia Data Suite and after that, reinstall all the devices that use the COM ports.

Failed to read the SMS parameters.

Your phone did not respond. See above.

Your mouse does not function any more.

Do not install the program on the same COM port that you use for your mouse. This will disable your mouse.

You are unable to re-install the program.

The program is running. Close the program by selecting Exit from the File menu or by clicking the Nokia Data Suite icon on the task bar with the right button of your mouse and by selecting Exit in the pop-up menu. Then try installing the program again.

10 Troubleshooting

Data/fax connection does not work.

Before you can benefit from the functions provided by Nokia Data Suite, you must subscribe to the corresponding services (data, fax, or SMS) from your service provider.

The infrared connection does not work.

You can use the infrared connection only if your phone is a Nokia 6110, Nokia 6130, or Nokia 6150, and your PC runs Windows 95 and it has infrared capabilities. The preferable distance between the two devices in infrared connection is one meter at most. There must be no obstructions between the two devices. The IR ports of the two devices have to be pointing at each other. See the user's guides of the phone and PC for more details.

For more information, visit the <http://www.forum.nokia.com> website.