

SUPPORT GUIDE FOR PC SUITE 4.0 for the Nokia 6210

NOKIA

Contents

1. INTRODUCTION	1
2. SYSTEM REQUIREMENTS	1
3. USING THE NOKIA PC SUITE 4.0	1
4. USING NOKIA CONNECTION MANAGER AND A DIAL-UP CONNECTION	6

Legal Notice

Copyright © Nokia Mobile Phones 2001. All rights reserved.

Reproduction, transfer, distribution or storage of part or all of the contents in this document in any form without the prior written permission of Nokia is prohibited.

Nokia and Nokia Connecting People are registered trademarks of the Nokia Corporation. Other product and company names mentioned herein may be trademarks or tradenames of their respective owners.

Nokia operates a policy of continuous development. Nokia reserves the right to make changes and improvements to any of the products described in this document without prior notice.

Under no circumstances shall Nokia be responsible for any loss of data or income or any special, incidental, consequential or indirect damages howsoever caused.

The contents of this document are provided "as is". Except as required by applicable law, no warranties of any kind, either express or implied, including, but not limited to, the implied warranties of merchantability and fitness for a particular purpose, are made in relation to the accuracy, reliability or contents of this document. Nokia reserves the right to revise this document or withdraw it at any time without prior notice.

1. INTRODUCTION

This guide briefly describes how to begin using the Nokia PC Suite 4.0. For more detailed information on the use of different applications included (I e Content Copier), please refer to Quick Guides, which can be found at <http://www.forum.nokia.com>.

2. SYSTEM REQUIREMENTS

To use the Nokia PC Suite 4.0, you need:

- An Intel-compatible PC equipped with Windows 95/98 or Windows 2000
- Functional IrDA port in laptop or DLR-3P cable

3. USING THE NOKIA PC SUITE 4.0

The Nokia PC Suite 4.0 features are:

- PC Sync
- PC Graphics
- PC Composer
- Nokia Phone Editor
 - Contact Editing
 - SMS (supports long messages)
 - Handling Profiles and Caller Groups

3.1 NOKIA PC SYNC

Synchronize calendar and contact data with e.g. Microsoft Outlook, Lotus Organizer and Lotus Notes using **Nokia PC Sync**:



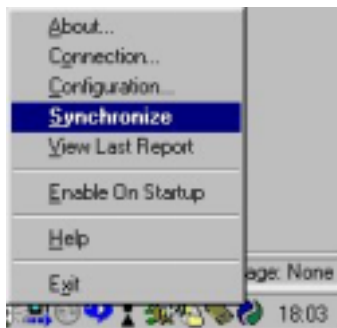
When PC Sync is ready for synchronization you will see the following icon on the taskbar in the bottom right-hand corner of the screen.



If PC Sync is not ready the following icon will appear:



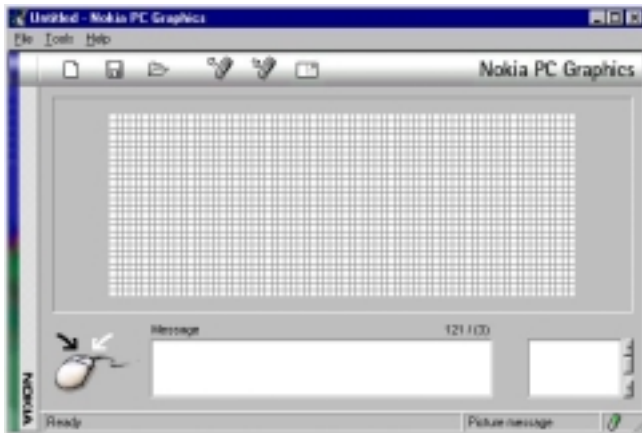
You can begin synchronization from the user interface of PC Sync by clicking the “Synchronize Now” button or by “right-clicking” the mouse on the PC Synch icon on the taskbar in the bottom right-hand corner of your screen and selecting “Synchronize” from the menu:



3.2 NOKIA PC GRAPHICS

Allows you to create your own picture messages and group graphics and to do the following:

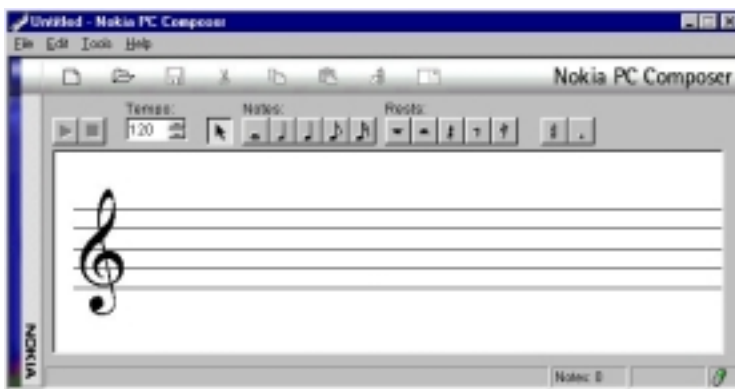
- Open BMP files and create group graphic or picture messages
- Update directly to your Nokia 6210
- Send messages to another Nokia phone that supports picture messages or group graphics using the GSM network



3.3 NOKIA PC COMPOSER

Enables the creation of your own ringing tones and allows you to:

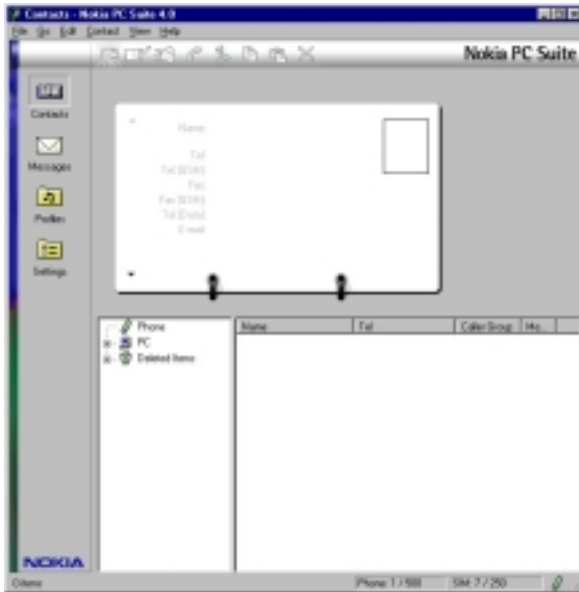
- Open mid and midi files and convert them into a Nokia ringing tone
- Update ringing tones straight to your Nokia 6210
- Send ringing tones to other Nokia phones over the GSM network



3.4 NOKIA PHONE EDITOR

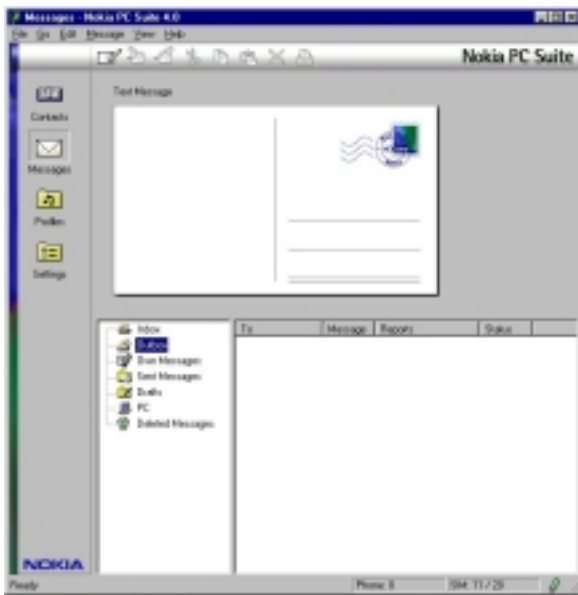
Contact editing. Allows you to do the following:

- Store your contacts on your PC's hard disk
- Create new contacts from your PC
- Export and import CSV files (comma separated values, used also by Outlook)
- Create your own business cards
- Send and receive business cards



SMS (short messages)

- You can also send long messages (concatenated)
- Store messages on your PC's hard disk
- Print messages
- Save messages as txt files on your PC's hard disk



Profile and Caller Group handling:

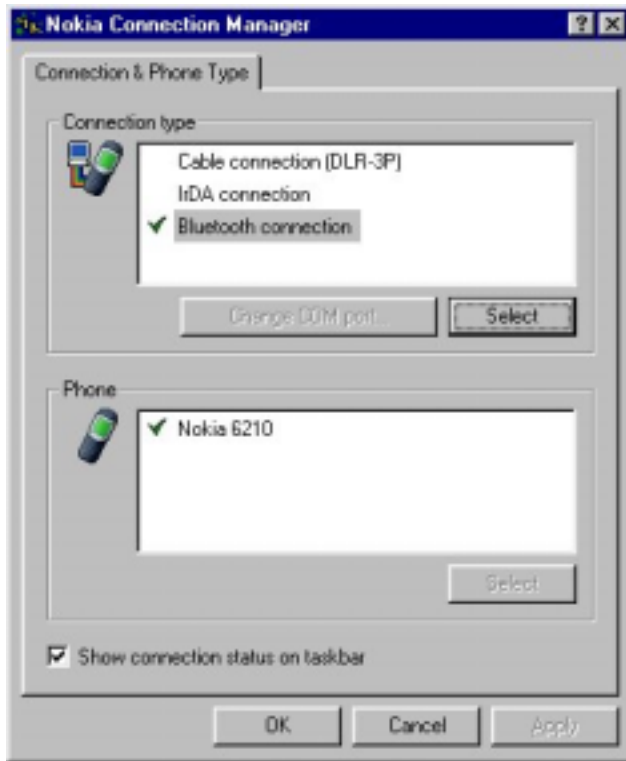
- You can activate a desired profile of your Nokia 6210 from your PC
- You can activate desired contacts on your SIM card or in your Nokia 6210 phone's memory to desired Caller Groups from your PC


You can create and use Caller Group Graphics with Nokia PC Graphics



4. USING NOKIA CONNECTION MANAGER AND A DIAL-UP CONNECTION

Handle connections between IrDa, cable and Bluetooth with the Nokia Connection Manager.



You can open this window by double clicking the Nokia Connection Manager icon  on the taskbar on the bottom right-hand corner of your screen. Once you have successfully connected and opened the Nokia PC Suite 4.0 you will see a green phone in bottom right-hand corner of the PC Suite 4.0 user interface:



If PC Suite 4.0 is not ready for use, there will be red "X" over the phone:



The **Nokia Modem Options** icon will appear in the Control Panel:



With Nokia Modem Options you can select the data connection speed you want when using a Nokia modem like the Nokia 6210 Cable.

