

NOKIA 6210



SUPPORT GUIDE FOR PC SUITE FOR NOKIA 6210

NOKIA

Contents

1. INTRODUCTION	1
2. CONFIGURATION.....	2

Legal Notice

Copyright © Nokia Mobile Phones 2000. All rights reserved.

Reproduction, transfer, distribution or storage of part or all of the contents of this document in any form without the prior written permission of Nokia is prohibited.

Nokia and Nokia Connecting People are registered trademarks of Nokia Corporation. Other product and company names mentioned herein may be trademarks or tradenames of their respective owners.

Nokia operates a policy of continuous development. Nokia reserves the right to make changes and improvements to any of the products described in this document without prior notice.

Under no circumstances shall Nokia be responsible for any loss of data or income or any special, incidental, consequential or indirect damages howsoever caused.

The contents of this document are provided "as is". Except as required by applicable law, no warranties of any kind, either express or implied, including, but not limited to, the implied warranties of merchantability and fitness for a particular purpose, are made in relation to the accuracy, reliability or contents of this document. Nokia reserves the right to revise this document or withdraw it at any time without prior notice.

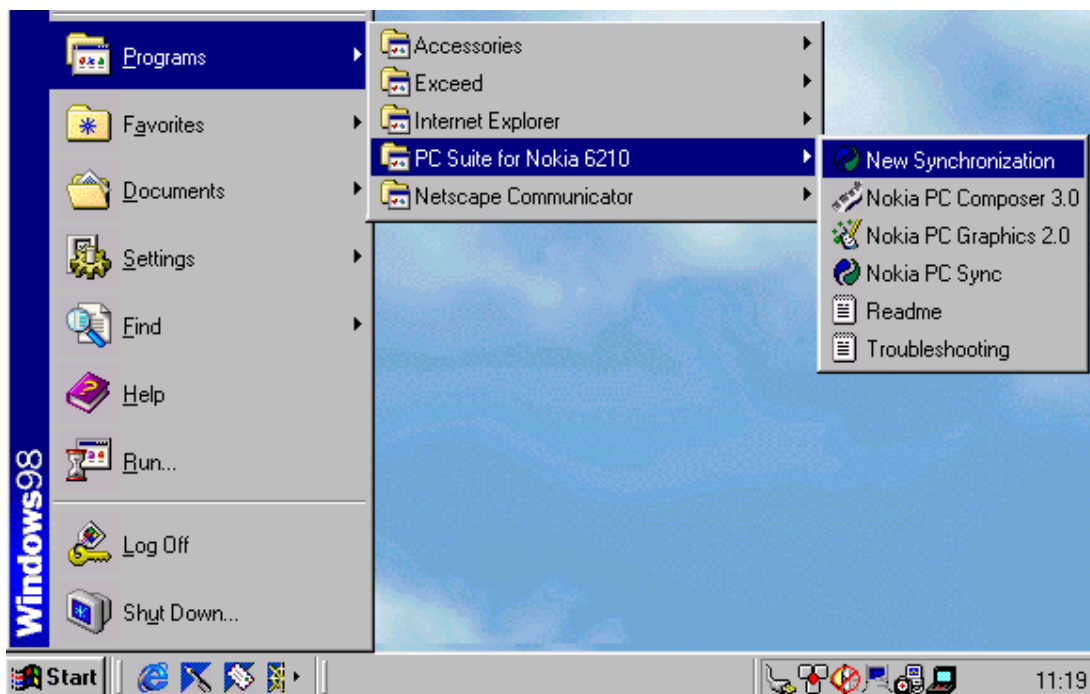
1. INTRODUCTION

How to configure PC Suite for Nokia 6210 with Microsoft Outlook 97/98/2000

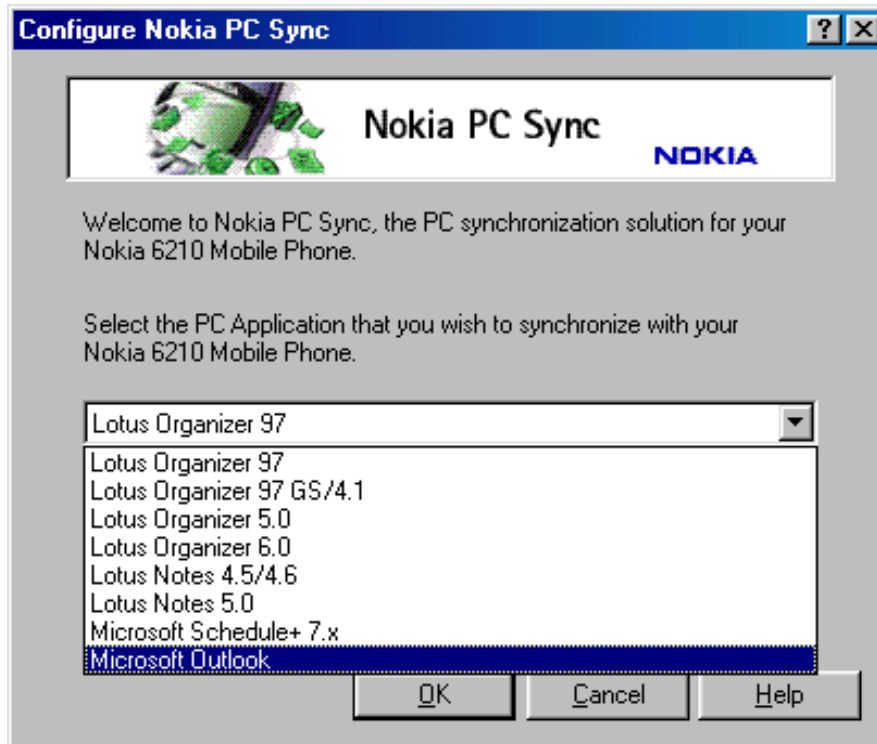
- A compatible PC Personal Information Manager (PIM) application:
 - Lotus Organizer 97/97GS/4.1/5.0/6.0
 - Lotus Notes 4.5/4.6/5.0
 - Microsoft Schedule Plus 7.0/7.5
 - Microsoft Outlook 97/98/2000
- The DLR-3P connection cable (available as an accessory) or a PC with infrared capabilities
- Note: The infrared connection is available for Windows 95/98 and Windows 2000 only.
- An Intel-compatible 100 MHz computer with 32 MB RAM, running Windows 95/98, Windows 2000 or Windows NT 4.0 with
- Service Pack 3 or newer and at least 10 MB of free disk space.

2. CONFIGURATION

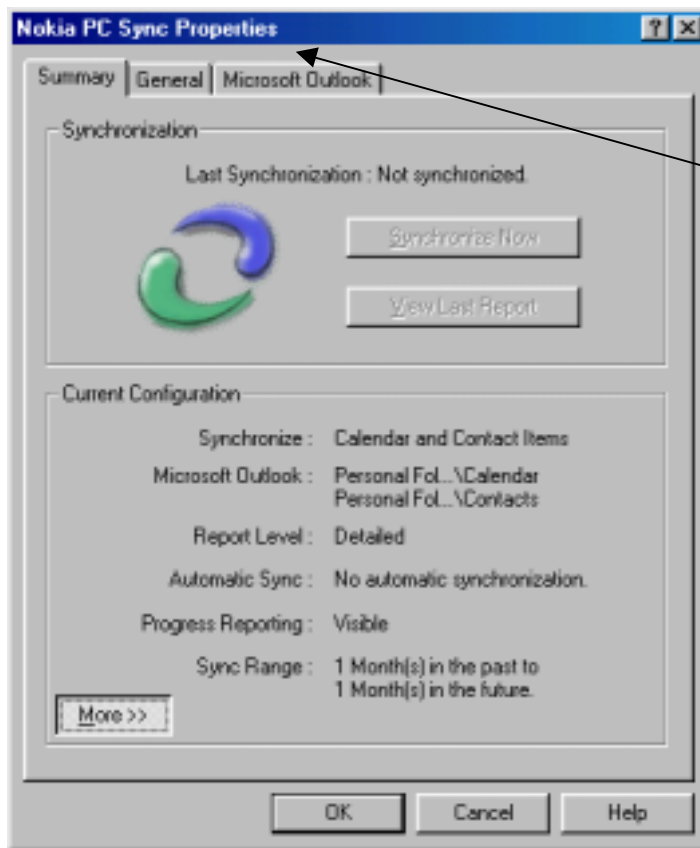
- Select Start and Programs and PC Suite for Nokia 6210 and New Synchronization.



- When you create a new synchronization task, you are asked to select the PC application that you want to synchronize with your phone.



- The currently supported PC PIM (Personal Information Manager) applications are shown on the list.
- Once you have chosen the PC PIM application, click OK.



- If the Synchronize Now and View last Report are unavailable, select the **Microsoft Outlook** tab to continue configuration.
- Click **More** to view or hide the more advanced configuration display for your current synchronization.

Q.

- In the General tab you can select the type of information you want to synchronize with your phone.

Nokia PC Sync Properties

Summary | **General** | Microsoft Outlook

What To Synchronize
Select the information you wish to synchronize.

☒ Calendar Items ☒ Contact Items

Synchronization Range
Specify the time range for the Calendar items you wish to include in the synchronization.

From: 1 Month(s) in the past.
To: 1 Month(s) in the future.

Synchronization Report Detail
Select the amount of detail to be included in the synchronization report.

Detailed

Advanced...

OK Cancel Help

- In the Advanced Options window you can set the frequency for synchronization.

Advanced Options

Automatic Synchronization
Select how automatic synchronization should be performed.

☒ None
☐ Once Daily
☐ Every Connection
☐ Every 1 Minute(s) whilst connected.

Progress Display Mode
Select the display mode for the synchronisation progress.
Visible: The progress dialog will be displayed.

☒ Visible ☐ Minimize ☐ Hidden

Conflict Resolution
When the same field is changed on both systems, which database do you want the synchronizer to take the information from?

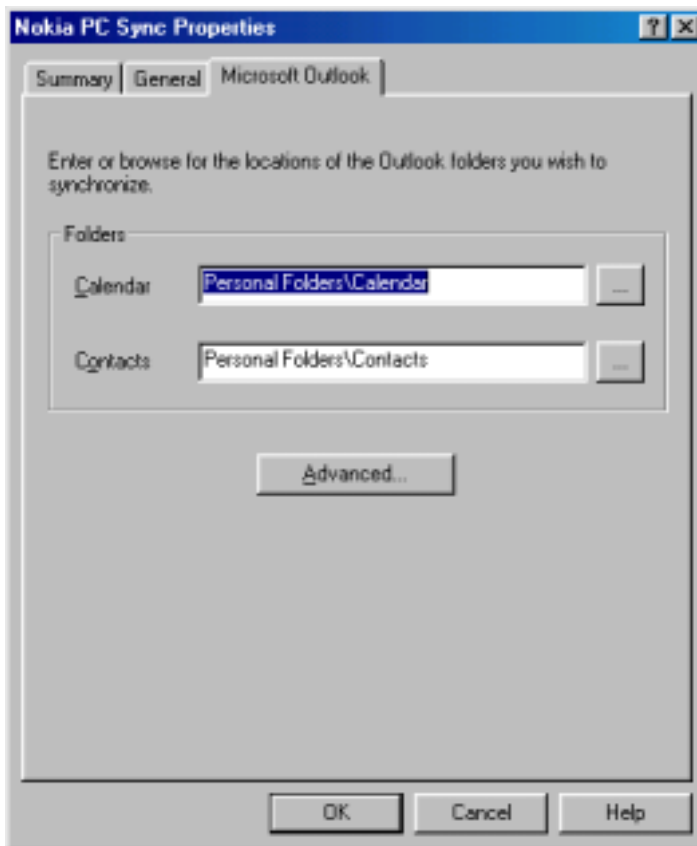
☒ Nokia Mobile Phone ☐ Microsoft Outlook

Contact Deletions
Select this option to ignore contact deletions on the Nokia Mobile Phone.

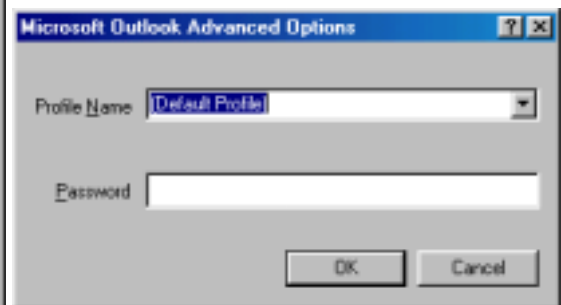
☒ Ignore contact deletions

OK Cancel Help

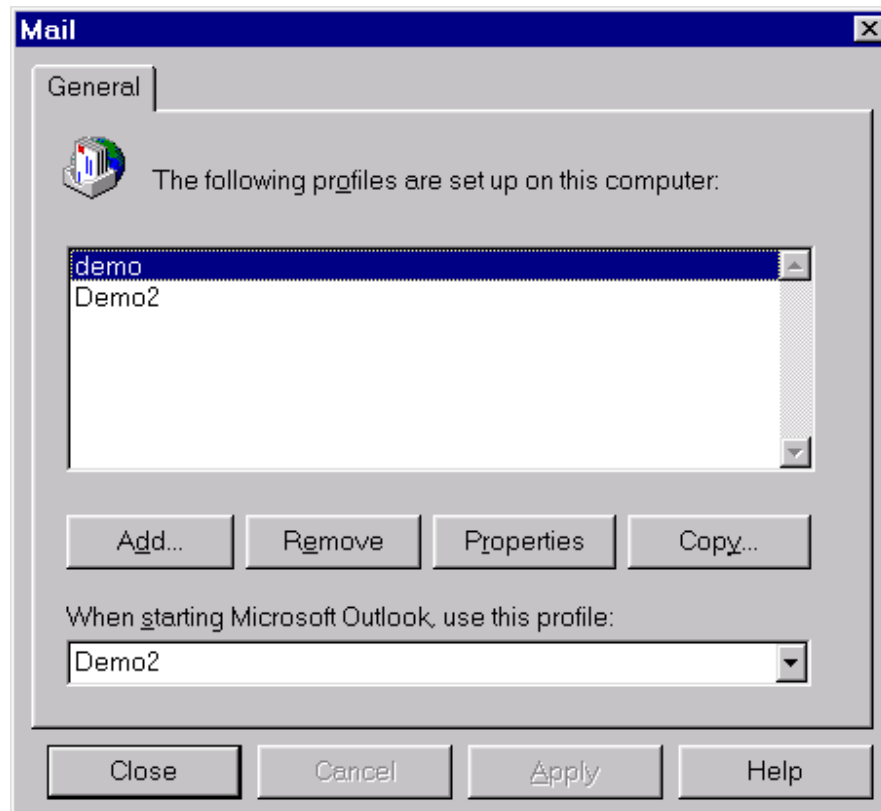
- In the Microsoft Outlook tab you can enter or browse for the names of the Outlook folders you want to synchronize with your phone.



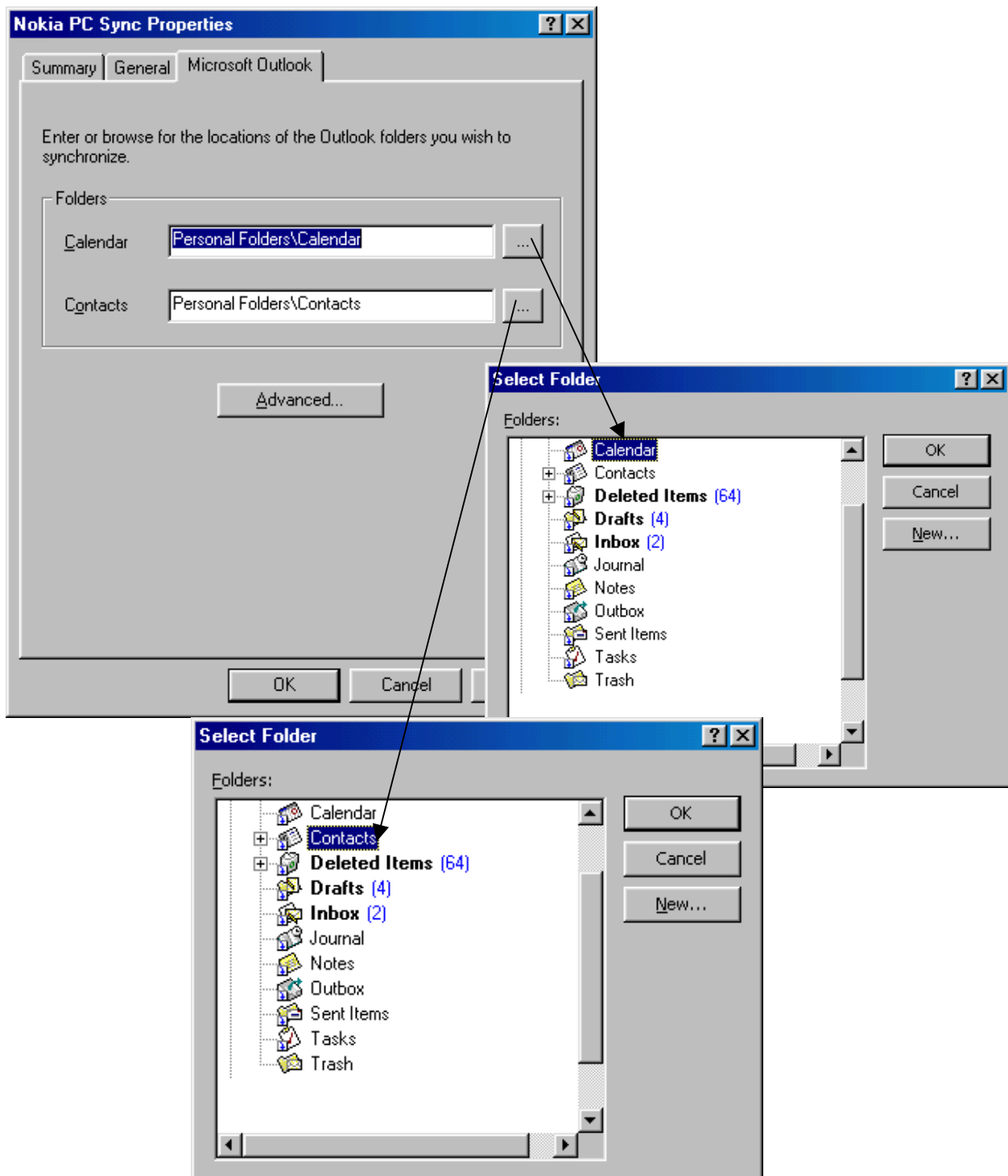
- In the Microsoft Outlook **Advanced** Options window you can enter or browse for the Outlook profile name that you want to synchronize with your phone. If this profile is password-protected you can also enter the password here.



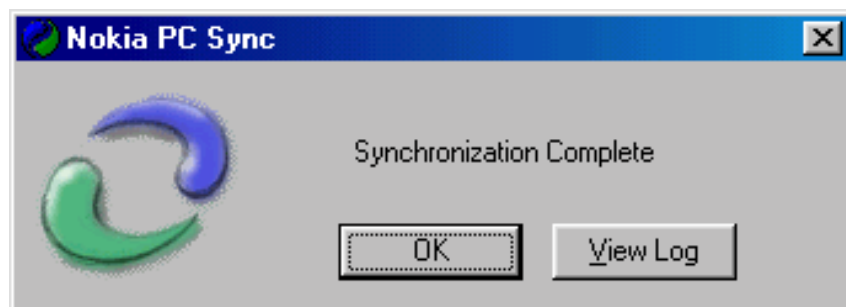
- The profile is same as the default profile you have set in Mail. Open the Control Panel and click the Mail icon. When Mail properties are open click the "**Show Profiles...**" - button



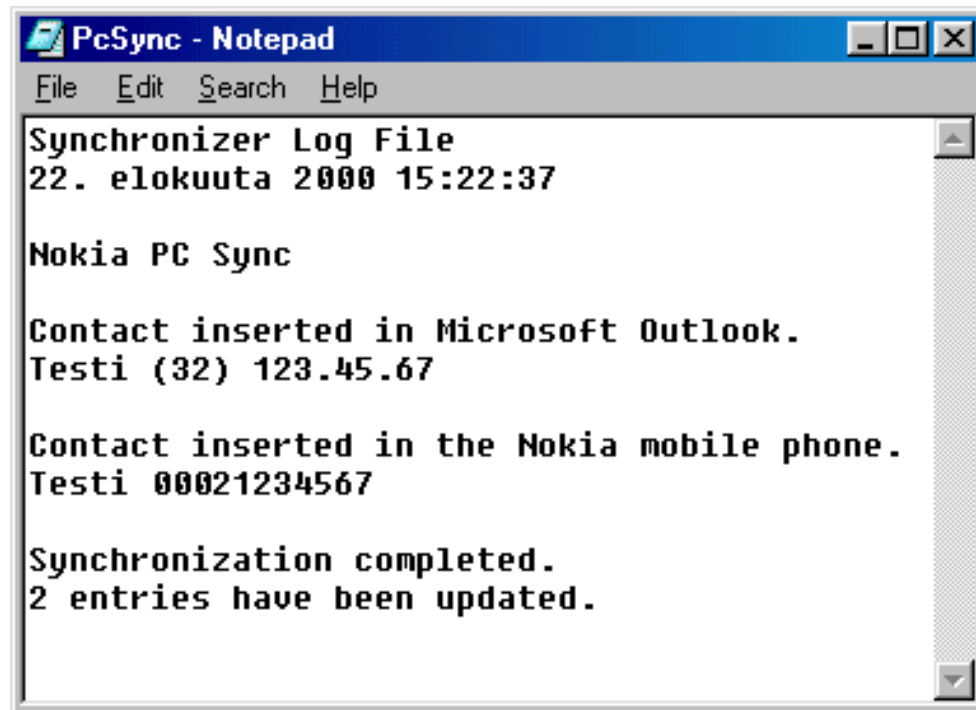
- Click the **Browse** button to browse for the file.



- After you have finished the configuration, Click OK. Synchronization will start according to the settings in the Advanced Options.



- Click View Log to view the **Log File**



- If you have problems activating the synchronization, please check the connection in the taskbar. Point at the PC Sync icon and click the mouse's right button.

