



## Install / Remove with the PC Suite for Nokia 9110 Communicator

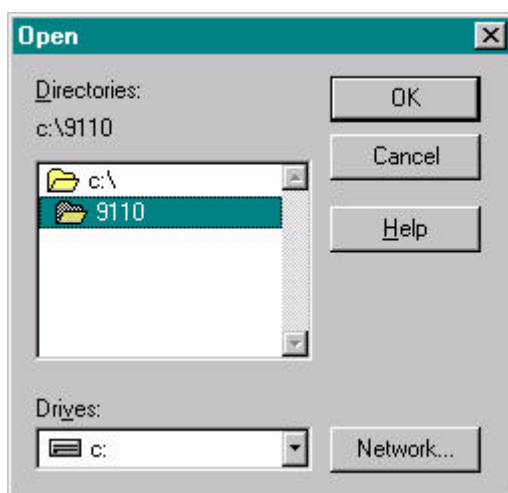
### 1. BASIC FEATURES

For installing software to the Nokia 9110 Communicator you need to use the Install / Remove option of the PC Suite for the Nokia 9110 Communicator. You can install software to the communicator memory or to the MMC Memory Card memory and remove software from both. For installation under Windows 3.x or Macintosh operating system you need to use NServer software and Install / Remove application from the System menu in the communicator.

Installable applications can be e.g. games. They are mainly developed by 3<sup>rd</sup> party software developers and you can check more details about these applications from <http://www.forum.nokia.com> partners section. All applications can only be installed via PC and they always need to have \*.geo and \*.ins files for successful installation.

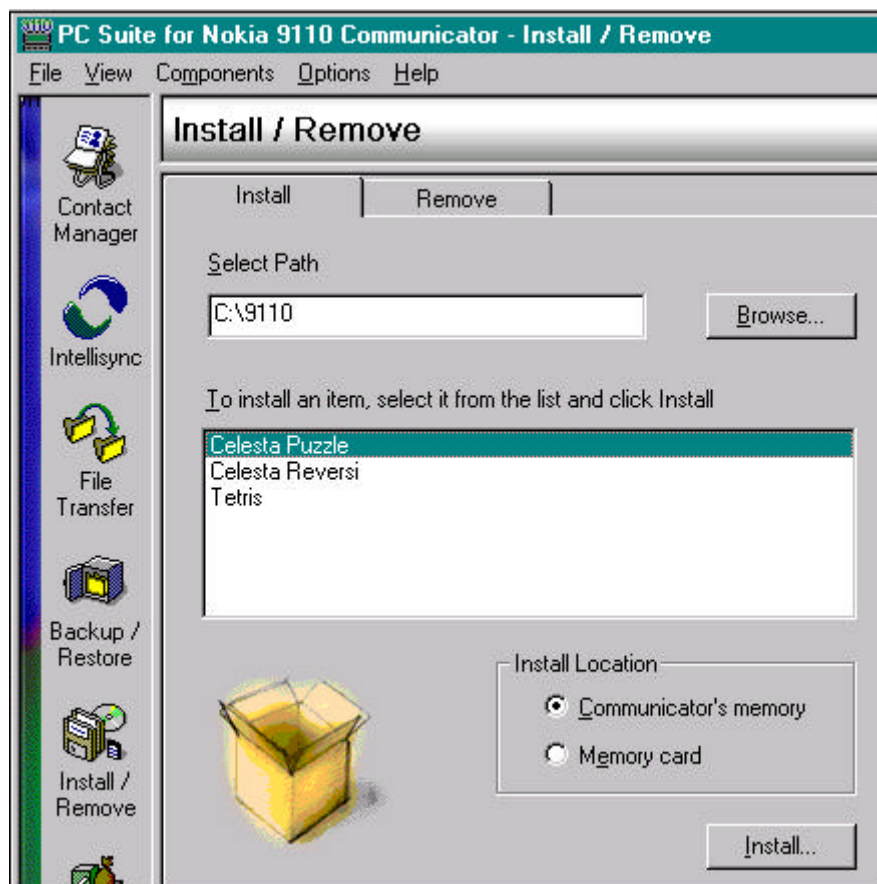
### 2. INSTALL APPLICATIONS

To install applications choose the Install / Remove icon from the left hand side of the PC Suite Main Window and select the Install tab. For finding the software you are about to install to the communicator type the path (e.g. C:\nokia) to the Select Path window or browse to the correct directory.



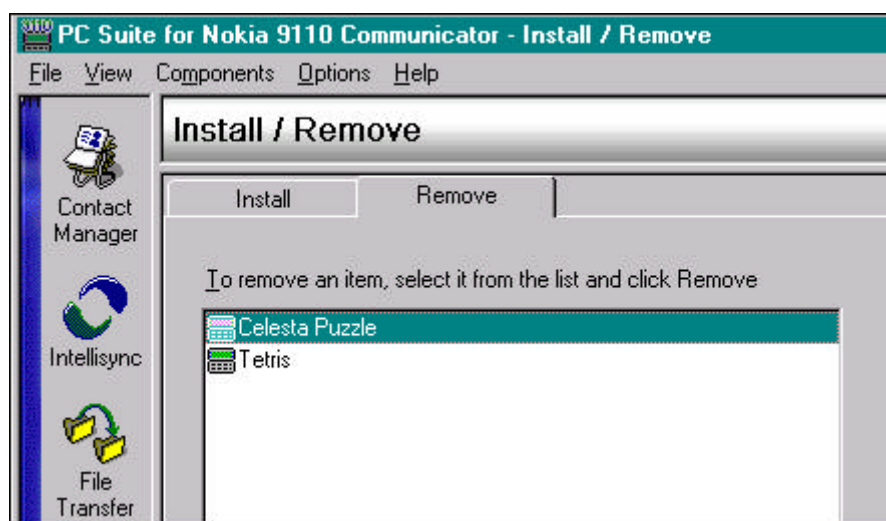
Select the item you are about to install from the list and connect the communicator with serial cable DLR-2 or with Infrared connection to the PC. After the connection has been successfully established the Install button in lower left corner is no more disabled (grey) and you can start the Installation. If the Install button remains disabled please check the connection between PC and the communicator. Select also do you want to install the application to the communicator memory (user memory 2 MB) or to the MMC memory.

MMC Memory Card is an accessory.



### 3. REMOVE APPLICATIONS

To remove applications choose the Remove tab from the Install / Remove view. Connect the communicator to the PC with cable or infrared connection. After the connection has been established you can choose all removable applications from the list. Select the application that you want to remove and press Remove. If the Remove button is disabled (grey) check the connection between the PC and the communicator.



### 4. TROUBLESHOOTING

Q: Why the Install button is disabled when I try to install software to the communicator?

A: The connection between the PC and communicator is not established. Please check that the COM port setting is correct, the connection type (serial cable or infrared) is correct and in cable use that the cable is connected properly. If these does not help disconnect the communicator from PC, restart the PC Suite and reboot the communicator by taking the battery off.

Q: Can I remove more than one application at the same time?

A: No you can not highlight and remove more than one application on the same time.

## **Legal Notice**

The contents of this document are copyright © 1995 – 1999 Nokia. All rights reserved.

Reproduction, transfer, distribution or storage of part or all of the contents in any form without the prior written permission of Nokia is prohibited.

Nokia is a registered trademark of Nokia Corporation. Nokia's product names are either trademarks or registered trademarks of Nokia. Other product and company names mentioned herein may be trademarks of their respective owners.

The contents of this document is provided "as is". Except as required by the applicable law, no warranty of any kind, either express or implied, is made in relation to the accuracy, reliability or content of the document. Nokia reserves the right to revise the document or withdraw it at any time without prior notice.

Nokia is not responsible for any lost of data, income or any consequential damage howsoever caused.